



Kapiti Branch Newsletter

Kapiti Branch Contacts

CONVENOR Deborah Shuker 297 2238
 SECRETARY Valerie Freeman 298 7396
 TREASURER Ken Brown 293 2260
 MEMBERS Barbara Humpage 298 6970
 MICROFICHE Brian Mountjoy 2970710
 EDITOR Rosalyn Smail 2987395

Tonight's Meeting

The area of NZ Defence Personnel Archives will be explored in tonight's meeting when Lynley Yates shares her expertise with us. Once again come prepared with paper and pen for note taking, as it is an unusual NZ family that does not have its share of service men and women.



Review - April Meeting

What an entertaining night we had with Pauline Neale who related to us about "My Dear Fanny"! Pauline had researched two professional entertainers Fanny Sara & Fred Clifton who toured NZ in the 1870s & settled here. Her sources were letters held in the Turnbull Library, and we look forward to hearing Part II of this highly Informative and entertaining presentation some time in the future.

June Meeting

Another meeting to look forward to is June's visit by Professor Rollo Arnold who will be speaking on "Brogden's Navies" - a fascinating story about those men who helped build the NZ railways.

Kapiti Branch, NZ Society of Genealogists
Australiana
Open Research Weekend
 10am to 4pm Sat/Sun
 28 - 29 June
 Lodge Rooms, Tararua St.,
 Paraparaumu
 NZSG Australian Collection
 Kapiti Microfiche Library

Open Research Weekend

Do you remember the excitement last year when 100 people attended our Research Weekend? Many were folk who had never before been involved in family history.

Our next Research Weekend is to be held Saturday - Sunday 28 - 29 June and our main concentration will be on Australia. Available for researchers will be:

- * NZSG Australian Collection of books and microfiche
- * Genealogy Research Directories to 97
- * NSW Between the Wars CD-Rom containing marriages and deaths
- * Australian National Phone Directory CD-Rom - 6 million names, phone numbers and addresses
- * NZ Birth Death and marriage Indices
- * NZ Cemetery Records & transcripts
- * International Genealogical Index
- * Callographic Services with Jill Larmer of Wellington

Do you have:

1. any Australian resources, eg CD-Roms, Microfiche, books, lists, leaflets etc., or
2. any material that would be suitable for our displays, eg, photos, boomerang, slouch hat, toy koala, maps, etc, that you would be willing to share with us during the weekend?

If so, please bring to the 25th June meeting or contact a member of the Committee (see contact list above), making sure they are clearly marked for identification.

We wish you all successful researching!!!!

Did your ancestors stop off at the Goldfields on their way to NZ?

Microfiche

VICTORIA

Births 1840 - 1913

Marriages 1840 - 1930

Deaths 1840 - 1960

But you don't own a micro-fiche reader? Borrow the Branch reader!!!

**For all Microfiche Requests
 Phone Brian, 2970710**

Notice Board

Otago Settlers Association 1848 Ships' Reunion

23 March *John Wickliffe* 15 April *Philip Lang*

8 Jul *Victory* 21 September *Blundell*

12 December *Bernicia*

Further information from Otago Settlers Assn.

P O Box 74, Dunedin

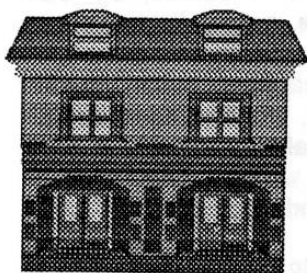
Genealogy Magazines - Ireland, Scotland, England Australia

Are you interested in being part of the round robin
distribution for a nominal cost?

Phone John Glover 29 84936

Dolls House

Residents of **Sarratt village in Hertfordshire** have come up with an unusual way to raise funds for vital repairs to their village church. They have commissioned a rather special doll's house displayed on launch day, 1 March and then raffled off on 29 June this year.



The house, built by Puppenhauser, is based on **Rose Hall**, one of three manors which form the village of **Sarratt**. The manor was built in the 1600s. The furniture and dolls for the dolls house have been made by hand to a scale of 1/12, reflecting the lifestyle of the **Kingsley family**, owners at that time.

Holy Cross Church dates back to 1190AD with a tower built in the 15th century. Tickets are available for 1 pound each. Send cheque made out to "Friends of Holy Cross Church", and sent with a stamped addressed envelope to:

"Sarratt Dolls House"
c/- Little Sarratt Hall, Sarratt,
Herts WD3 6BT, UK

From *In Britain*, March 1997

I have a photo album of Walker & Mother, 1900 Sutton; Howard, Walter, Frank & Stan 1904, & later photos of Walker. Purchased at Church Fair.

Barbara Humpage, 04-2986970

Snippets

Scottish Interest Group:

Meetings are held on 28th day of each month (except March & November), usually at VUW School of Architecture and Design, Vivian St, entrance opposite the back of *Trekkers Hotel*, 7.30 for a 7.45 start. This group is an offshoot of the Auckland SIG and not a part of Victoria University.

For future meeting topics, ring Edith, 04-388 8069, Les 04-233 8876 or Margaret 04-477 3949. Subs are \$18 individual, \$30 household, \$15 unwaged.

Wellington NZSG Newsletter

Some Americana

Delayed birth certificates are those that are filed many years after birth by people who do not have original birth certificates. They are issued after affidavits are sworn by relatives or doctors attendant at the birth, or proof of birth from a baptismal certificate or family Bible records.

In the USA, Social Security cards were issued to all citizens in 1940. To obtain a card, citizens had to provide a birth certificate. Those who did not have one on file had to go to their County Clerk's office to have one registered. So check the 1940 Birth Index for those lost US births.

People born as early as 1858 had to register their births in 1940.

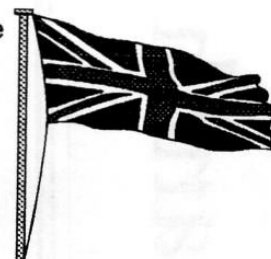
*Marin Co, Florida, Gen. Society
newsletter
via Dunedin NZSG Newsletter*

"THE DOWNS"

The Downs is the anchorage on the east coast of England which lies inside the Goodwin Sands and between the North and South Foreland. The Goodwin provides shelter from all easterly winds, the land shelter from the west. It was a particularly busy anchorage during the days of sail, as it was there that the incoming merchant vessels picked up their pilot for the Thames and outgoing merchant vessels dropped theirs. This was always done while at anchor, unlike today when ships need not stop to embark a pilot. The Downs was also a convoy assembly area in wartime and a convenient anchorage for ships operating in the southern North Sea during the days of sailing navies.

GRAVESEND

On a lot of reports concerning the ships bringing emigrants to NZ it says that the vessel left Gravesend. Why Gravesend, why not some other dock in the London dock area? Emigrants from all over Great Britain, I, would be brought to the Emigration Depot at Blackwall, where they would be fed and housed before boarding the ship at Gravesend. The Emigration Depot had previously been a large hotel. After the ship had loaded its cargo at one of the docks it would be towed down to Gravesend to take on the passengers. To quote from William Stones book "New Zealand, Land of Promise etc" of 1868 :-
"Embarkation - Passengers embark at Gravesend the day following the Ship's leaving the Docks." There was a similar Depot at Plymouth. The Depots were run by the "Agent - General for New Zealand"



There were a set of rules published under the heading "Depot Regulations" which the passengers had to comply with whilst there. There were 14 regulations altogether, which covered everything from "profane language" to the likes of regulation No. 4. "The emigrants are to rise not later than 6 o'clock in the summer and 7 o'clock in the winter; and must be properly washed, and get their apparel in good order before breakfast. They are to be in bed before 10 o'clock."

Should an Emigrant offend against the regulations he or she would have been liable to dismissal from the Depot, and loss of Deposit and Passage!

Brian K. Mountjoy.