

## Not a Convenor's Comment

Remember to check our website <http://KapitiGen.org> for additional information on events, Branch, Interest & User Groups, and any late changes.

As Hilary explained last month, she is away catching up with family in Europe - which I doubt is a restful recuperation after the marathon of organising her DESMOND family reunion. We look forward to hearing about her travels and hopefully one or two research adventures.

It is hard to realise that this month is the second to last branch meeting for the year. I hope that you all achieved at least some of your genealogical goals for the year. You did set some, didn't you? 😊

It is the time of year when we, the committee, put on our thinking caps to devise an interesting programme for next year. We welcome your input. Please talk to a committee member at a meeting, or send your suggestions about what you would like for 2017 to [Programme "at" KapitiGen.org](http://KapitiGen.org)

In addition to forward planning, it is also time we checked to see if we are still meeting your needs as members of Kapiti Genealogy.

A short survey is in preparation which we hope to have ready for November before the commitments of the festive season overwhelm us all. So when it arrives, please take the time to complete the survey and let us know what you would like from **your** Branch.

As per Hilary's September Comment, we are aiming at a mammoth Christmas Hamper (or two or three) for the grand finale raffle in November. All contributions welcome (non perishable please). Stephen Sherring is collecting the items this year, so bring them to the October Branch meeting or leave them with a committee member.

On another tack, perhaps some of you would like to "make our day" by volunteering for the committee. With the new rules now in place we are no longer constrained by the committee consisting of only NZSG members, providing we meet certain minimum requirements. We are still at least one person down from an optimal level, even with the return of Bill McKeich to the committee! Some people just can't stay away. Welcome back Bill.

Look forward to seeing many of you at our October meeting.

**Lorna Henderson**

On behalf of Hilary and the committee

**This month's meeting is  
on  
October 25th 7-9 pm**

**Irish Soldiers in Early  
Colonial New Zealand**

### Inside this issue:

Not a Convenor's Comment	1
October meeting	2
Branch news	2
Certificate collection	
How to be your own DNA Detective	3
APFHC News	4
Round Robins	4
Dates for your diary	5
Interest Groups	5
Tithe details and maps from "The genealogist"	6
From the Committee	7
Branch Information	8
Membership	8

## October Branch Meeting

**When:** October 25th at 7-9pm  
**Where:** Kapiti Community centre  
**What:** **Irish Soldiers Discharged from the Imperial Military Forces  
in Early Colonial New Zealand -- Brad & Kathryn Patterson**

This talk focuses on Irish servicemen who opted to take their discharge from the Imperial Regiments in New Zealand prior to 1870. Did they marry and establish families? What civilian occupations did they take up, and with what success? What roles did they play in their communities?

Brad and Kathryn have studied the life histories of over 1250 individuals, drawing from published and manuscript records, newspapers, and materials provided by family historians.

Amongst Brad's many roles, he is a Research Fellow, author, and vice-president of the Irish Studies Association of Australia and New Zealand. Kathryn is a Research Associate, and among her many past roles she was Director and Chief Archivist of Archives of New Zealand.

**Don Niccol** will introduce his Smythe & Bullen family history publication, a copy of which he has donated to our library collection.

**Following** the guest speakers, there should be time for a brief general discussion on brickwalls, exciting finds and feedback, so bring along your contributions.

**Meeting convenor:** Deborah Shuker

## Branch news

### Reminder - There is still time!

Just to remind you that there is still an opportunity at the October meeting to contribute to the Christmas hamper(s) for our end-of-year raffle. Bring anything that you would like to find in a hamper if you were lucky enough to buy the winning ticket!

---

### Collection of Certificates for the NZSG collection.

One of the wonderful services provided by NZSG for its members is the Certificate Collection. Over many years, members have sent in copies or originals of certificates and documents. These are indexed and members can request copies of these. This service saves members a significant amount of dollars (and time) in their research.

Kapiti Branch will make a bulk contribution to the collection early next year. We will be collecting certificates until February next year. So photocopy your certificates (or bring originals if you no longer need them), to any meeting, give to any committee member or to Kathy Callaghan who is coordinating this collection. Or you can post them to Kathy at 81 The Drive, Paraparaumu Beach. Print out scanned copies, as this will save time and money for those who do the indexing.

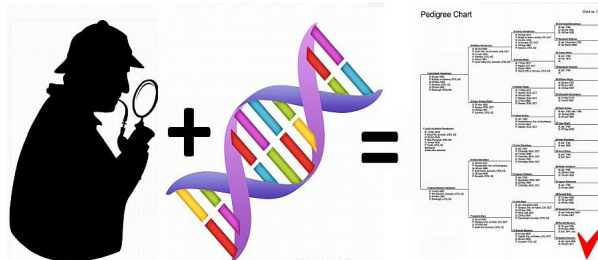
Other documents we will be collecting besides birth, death and marriage certificates are baptisms, parish records, marriage banns, intention to marry certificates, coroner's reports, and burial records.

The collection is NOT limited to New Zealand documents. This your opportunity to help others benefit from your research.

**Kathy Callaghan**

## How to be your own DNA Detective

DNA. Those three magic letters holding the key to so much that makes us who we are. For the price of a few certificates you too can begin a journey of exploration. But where to begin? Firstly - DON'T if you are not prepared to accept what you, and your family, may or may not learn ([http://isogg.org/wiki/Before\\_You\\_Buy](http://isogg.org/wiki/Before_You_Buy)).



Like all new ventures there's new terminology to be learnt - don't let it daunt you, keep reading, it will all make sense over time.

Recommended links and helpful blogs can be found on the ISOGG Wiki: (<http://isogg.org/wiki/>). Here are some of the links I mentioned, or should have if I didn't.

Glossary of terms: [http://isogg.org/wiki/Genetics\\_Glossary](http://isogg.org/wiki/Genetics_Glossary) and detailed comparison of tests and testing companies:

[http://isogg.org/wiki/Portal:DNA\\_testing](http://isogg.org/wiki/Portal:DNA_testing); Autosomal DNA introduction: [http://isogg.org/wiki/Autosomal\\_DNA](http://isogg.org/wiki/Autosomal_DNA)

I particularly recommend Kelly Wheaton's guides, any of Maurice Gleeson's YouTube videos or his webpages, not to forget our own Gail Riddell's articles published in the FamNet newsletters, and from the list of more blogs than you'll ever get through: [http://isogg.org/wiki/Genetic\\_genealogy\\_blogs](http://isogg.org/wiki/Genetic_genealogy_blogs) - try the ones by Blaine Bettinger, Roberta Estes, Judy Russell, Debbie Kennett, Jim Bartlett, with apologies to those just as well worth reading/following but not mentioned.

**The tests:** <http://www.genie1.com.au/blog/58-which-dna-testing-company> has a good comparison between companies including pricing and postage from an Australian/NZ perspective.)

**Autosomal DNA** is the test we can all take and gain matches within the last 4-6 generations to our ancestors on all our lines, male or female. Great for filling in those blank bits in your tree by collaborating with your closest matches. It can reach further back than that but how far, and whether that would be able to answer a specific problem you are trying to solve would be subject to the vagaries of inheritance of this sort of DNA. You may need to recruit specific cousins descended from the lines concerned.

To make the most of your results it is best to also have known close relatives tested, ideally at least one parent/aunt/uncle or cousin from each "side" of your ancestry. Remember to upload your result file to [GEDMatch.com](http://GEDMatch.com) This is FamilyTreeDNA's FamilyFinder test, (\$79 US plus \$\$12.95 US. P&P to here, \$13NZ back) or the only tests offered by Ancestry (\$205 AUS fully post paid), and 23andme (\$149 US plus P&P)

**yDNA** for the men only, to investigate direct male line ancestry, reaches far further back in time than the above Autosomal. Ideally also find and test the most distant direct male line cousin you can find to validate the DNA signature of your common ancestor. The options of yDNA37, yDNA67, yDNA111 are levels of precision where more is better, but bear in mind the cost benefit. If you want to test for all lines, combining yDNA37 with FamilyFinder at FamilyTreeDNA is a good budget way to start, and if you get addicted, the yDNA37 can be upgraded at a later date to the preferred yDNA67 (without re-testing). My personal preference after that isn't to go for yDNA111 (unless you turn out to be one of the really common haplogroups such as R1b and have close matches at yDNA67 needing to be differentiated), but to change tack and use SNP testing instead, preferably also contributing to science and the growth in our knowledge of the overall tree of mankind by biting the bullet and testing BigY - an investment that keeps on giving rather than requiring more testing as the tree changes.

**mtDNA** - your direct maternal line, can be tested by all of us, but bear in mind that mitochondrial DNA is only passed on by daughters, so check you are getting the right person's mtDNA for your objective. Also bear in mind that it changes so slowly that it is of little use in genealogical timeframes unless there's a specific problem to solve.

**Summary:** A good starting point is to test FamilyFinder at FamilyTreeDNA and upload the resulting file to [GEDMatch.com](http://GEDMatch.com) to compare against those tested at other companies. Add in yDNA, at least 37, but preferably 67 markers, for a selected male of your surname of interest. If you get addicted and want to fish in another pond of matches, also test at Ancestry.

Join in the fun, you never know what you'll learn, or who you'll be related to - and will never run out of research to do as the Murphy's Law of DNA testing is that your closest and/or your most interesting match will either be adopted or know nothing much about their ancestry.

## APFHC News



Help instructions for the above program are now on our website under **Membership > Members only**.

### Help Sessions

Bev Chappell organises sessions to help with research for the public and members on Wednesday mornings from 10-12am at the APFHC.

Volunteers to help with these sessions are always welcome and appreciated by those needing assistance.

### Research Assistance

Apart from the weekly Wednesday morning sessions, members needing assistance with their research can use the KapitiGen Forum form on our website (<http://www.kapitigen.org/resources/research/genforum/>).

Your request will be passed on to someone who has expertise in that area.

### New Resource

We have just added a new resource to the computers at the APFHC - "**The Genealogist**".

See <https://www.thegenealogist.com/coverage/> for a list of what our diamond subscription covers.

Please note that we only have a single subscription, so even though you can access it from any one of the six PCs, please check that nobody is using it on one of the other PCs before firing it up. Happy searching!

### Additional NZ records.

Overcome the lack of wildcard searches of our Department of Internal Affairs BDM indexes by using our FindMyPast subscription at the APFHC to find your NZ ancestors, in the same indexes.

*Lorna Henderson*

### Computer Password at the APFHC

The APFHC computer password changes regularly: check the red folder in the drawer.

Members need to get the cupboard key from the library Welcome desk. We also ask that you sign the blue sign-in book found in the drawer - such statistics help us when applying for grants.

Please replace the cover on the computer when you leave and lock the keyboard in the cupboard.

### Printer, Paper and Toner

Please remember that you are asked to contribute 10c. per copy for the printing service provided.

This amount does not even cover the cost of the toner used.

Where possible use memory sticks instead to record the results of your research.

### Computers

If you are researching and do not need the help of the volunteers, please consider coming at a time other than the 10 to 12 time slot on Wednesday mornings, when use of the computers is at a premium.



## Round Robins

If you wish to subscribe to either of our Round Robin magazines, contact Meryl Opie at ([RoundRobin "at" KapitiGen.org](mailto:RoundRobin@KapitiGen.org))

Further details on our website under [Resources > Round Robins](#).

Subs \$15 per year (starting Jul/Aug) to either Family Tree magazine or Who Do You Think You Are.

This is a really good way of keeping up with the latest news and having access to interesting articles without having to subscribe to the magazines. They all have a wealth of ideas and information

When the 'round robin' subscribers have finished with them, the magazines are put into folders in our library at the APFHC. So do check them out. Most articles do not date.

## Dates for Your Diary

### Kapiti Genealogy

#### Venues

APFHC: Alison Procter Family History Centre, Ground Floor, North West Corner Paraparaumu Library

KCC: Kapiti Community Centre, Pak 'n Save Hall, 15 Ngahina St, Paraparaumu

**All Kapiti events are also in the [programme information on our website](#), both in a downloadable document and on the calendar.**

**October 25th: Tuesday 7pm (KCC)** Monthly meeting . Details on page 2.

**Every Wednesday: 10 a.m. to noon.** Experienced researchers on hand to help you use our resources at the APFHC and further your family tree. Six computers available, all with Ancestry, and worldwide FindMyPast. - and now The Genealogist (see page 4). Public and members welcome

**Interest Group meetings (see [Programme>Interest Groups on our website](#) for further details)**

**Thursday 13th October:** Australian interest group (APFHC) 10 to 12 noon

**Saturday 19th November:** Roots magic group at Kapiti Community Centre., 2-4pm.

**Saturday 29th October:** NZ Kapiti Legacy Users Group, 1- 4pm at the Kapiti Community Centre.

## Interest Groups

### Australian

Second Thursday of every month from February to December.

Next session **Thursday November 10th** for help with any Australian research. 10-12am at the APFHC.

### Legacy Users

Our meetings are the last Saturday of every second month from February to October.

Everyone is welcome.

Next meeting **Saturday October 29th** at the Kapiti Community Centre. Cost \$3, pay at the door. Tea and coffee available.

**Please note** there will be a full day session to end the year on **Saturday November 26th**. Contact Gerald Twiss [Gero "at" ihug.co.nz](mailto:Gero@ihug.co.nz) for more details.

### Roots Magic group

Meets 3rd Saturday every 2nd month at the **Kapiti Community Centre**, from 2 - 4pm, doors open 1:30pm. \$3 to cover costs/ refreshments.

Our September meeting covered Named Groups and taking a tree from FamilySearch) Last meeting for the year is on **Saturday 19th Nov. 2-4**, main topic: Sources: free form or templates? Bring along your questions and tips.

First meeting for 2017 will be in **March**.

Contact form on our web page (<http://www.kapitigen.org/programme/interest-groups/rootsmagic/>) for enquiries/suggestions.

### DNA

Informal (free) 2-monthly group for anyone interested in adding DNA testing to their genealogy toolkit.

Our last meeting for the year on **8th October** was well attended with several people starting to get their results and trying to make sense of them. We spent a bit of time on the tools offered by [DNAGEDCom.com](http://DNAGEDCom.com), particularly the Autosomal Tools DNA analyser that shows you the summary of your FamilyTreeDNA match list along with your chromosome browser on one handy page (also works for GEDMatch downloads of your Tier 1 data)

Those tested at Ancestry may find their subscription client tool of use. It allows you to easily and quickly download your ancestry match lists, trees, and compare with others who have shared their match list with you.

Group restarts in **February 2017**

Lorna 04 293 7771

All questions welcome.



# Tithe details and maps from 'The Genealogist'

"The Genealogist" can now be accessed from the opening screen on our APFHC computers and Frances Braddick has used it successfully to find all sorts of interesting details about the location and size of land owned and farmed by relatives in Devon. She discovered what they paid in terms of tithe to the church, who owned their rented land and how much rent they paid. The relative maps show where each field is located.

On opening the programme, the first page allows you to enter the name of the person and parish or county. From the 'record collection' box, choose the 'tithe and landowner' option. (Diagram 1)

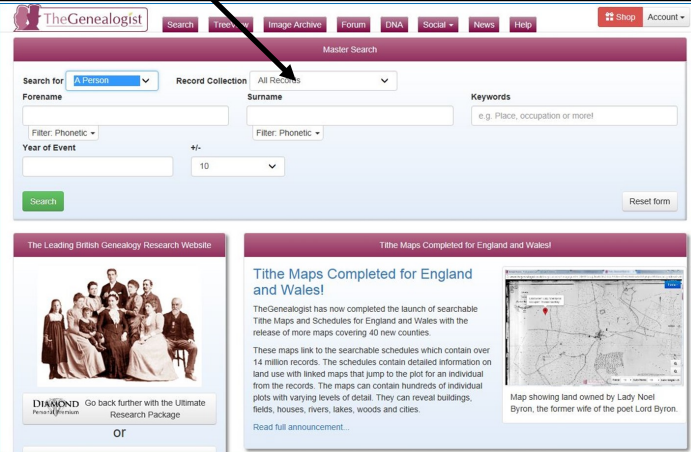
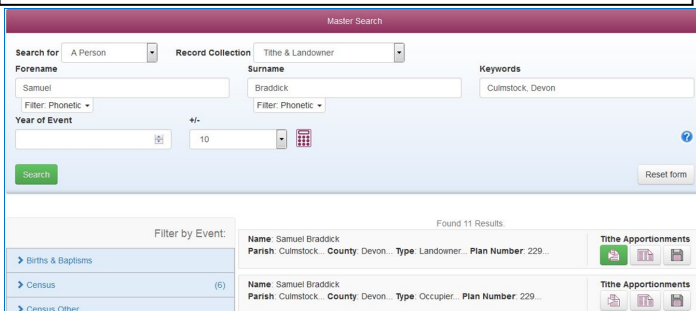


Diagram 3 - tithe map showing location of Samuel Braddick's house and garden.



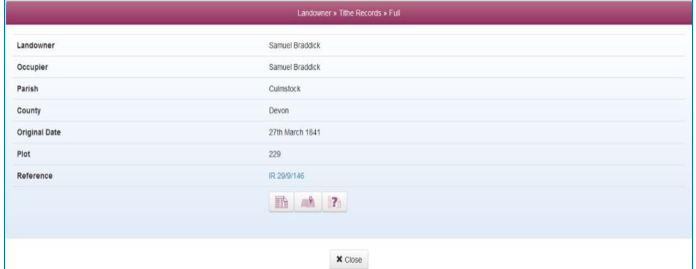
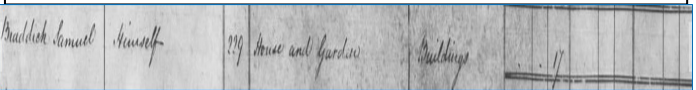
Clicking the green 'search' button will reveal a list of all the references linking the person with land. The top of the list is seen in diagram 2. below.



Samuel also farmed rented land as can be seen from the list in Diagram 2. Choosing one of these entries will reveal the land owner and who else rented land from him. The list below gives details of how much land they rented what tithe they paid the church, how much the rent was and what each field was used for.

Choose the left hand icon under 'Tithe apportionments' to see the details of entry. This tells you that Samuel Braddick was the owner of the house and garden and that 17pence was paid in tithe to the Vicar! The details below give the plot and map reference. The central icon brings up the map as shown in diagram 3.

LANDOWNER	RENTAL	NAME	TYPE	STATE	ACRES	ROTHS	PERCHES	POUNDS	SHELLINGS	PENNY	STREETS
Samuel Braddick	17	House and garden	Landowner	Devon	0.0	0	0	17	0	0	
Samuel Braddick	17	House and garden	Occupier	Devon	0.0	0	0	17	0	0	



Try it for yourself to see where your relatives lived, and what land they owned. Its fascinating!



## From the Committee

### This month's meeting:

**Tuesday October 25th 2016**

7:00pm: supper

7:30pm: meeting starts.

### Supper roster: I - N

If your surnames starts with the above letters, your help with the supper would be appreciated.

**Committee meetings:** 7.30pm, 1st Wednesday of months February - December.

### Welcome to new members:

Keith WILLIAMSON and Mary WHITE and welcome back to Ruth MOXEY

Please make yourself known to other members at the monthly meetings. It's our chance to get to know you and share experiences, and your opportunity to find out where you can get help with your story.

We hope you'll enjoy our facilities and get great benefit from your membership.

### Welcome back Bill!

Committee members are delighted that Bill McKeich has agreed to be co-opted back onto the Committee. He is helping John Glover with the Schools Records Project by doing the initial liaison with the school.

### The Genealogist -

Don't miss Frances Braddick's 'how to' this month on extracting tithe maps from our newest resource - exciting for those researching land ownership in 1800s England and Wales.

Go to <https://www.thegenealogist.com/coverage/> for a complete list of what our diamond subscription covers. Along with the standard UK vital records (births, deaths and marriages) and census data, it also has specialised records only available on that site. Just some of the collections available, in no particular order, are:

- \*Scanned copies of the Railway Gazette,
- \*Tithe map collections - complete for England and Wales (<https://www.thegenealogist.co.uk/featuredarticles/2015/the-tithe-maps-project-317/>),
- \*Parish records for Norfolk (indexed and images),
- \*Transcriptions for Worcestershire and Essex Parish registers - and many others.

Don't forget to check that, nobody else is using our one subscription before opening, although it can be accessed from any of the six PCs .

### School records transcription project

This project is playing an essential part in digitizing our local schools' records.

If you are willing to take part in this project contact the coordinator, John Glover. He will be pleased to hear from you.

([pamandjohn "at" paradise.net.nz](mailto:pamandjohn@paradise.net.nz))

### Help with Research

Sue Greene, who has been our Research Officer for several years is no longer able to take on serious genealogy research. Many thanks, Sue, for the valuable help you have given to many people with a variety of requests.

If anyone is willing to assist with research queries in one or more specific areas/ countries, please contact a member of the Committee. Your help will be appreciated.



**Late breaking news** and events that we find out about between newsletters are added to [our website](#). By logging into the website you are able to post events of relevance and interesting links yourself as well as update your own contact details.

### Kapiti Genealogy on Facebook

Check out [our facebook page](#). You don't need to be a registered user of facebook to read it, simply click on the link if reading this on your computer, or search for Kapiti Genealogy facebook.

Please let Kathy Callaghan have any suggestions on how to make the best to use of this medium. If a Facebook user, do remember to click "like".

### Suggestions for next years programme, please!

What do you want to see included in next year's programme? This is your chance to bring to the committee's attention any topics that are of particular interest. Have you heard any interesting speakers? Do you have an idea for a 'how to' or workshop?

Please give us your ideas. It's important that the programme includes something for everyone. It is your Branch!

Keep on searching!





### Branch meetings:

4th Tuesday, Jan - Nov

Time: 7pm, supper / research

7:30pm, meeting start

### Branch Committee

**Convener:** Hilary Cunningham

Phone: 04 971 7986

Convenor "at" KapitiGen.org

**Secretary:** Denice McCarten

Phone: 905 8266

secretary "at" KapitiGen.org

**Treasurer and Membership:**

Lorna Henderson

Phone: 293 7771

treasurer "at" KapitiGen.org

### Programme & Activities:

Ian Brooking

programme "at" KapitiGen.org

**Librarian:** Beverley Chappell

**Member:** Bernard Mc Manus

**Newsletter Editor:** Sheila Jolley

editor "at" KapitiGen.org

**Computer Liaison:** Frances Braddick

**Webmasters:**

Lorna Henderson & Ian Brooking

**Sound System:** Ian Brooking

**Schools liaison:** Bill McKeich

### Email links

Throughout the newsletter email links are clickable. Remove the "at" and insert the @ symbol before sending.

### Membership

We welcome new and returning members. Our annual subscription is \$25.

Please refer to the website (<http://www.kapitigen.org/2016/01/membership-renewals-201617/>) for joining and payment instructions.

### Ex-officio committee

**Trip organiser:** Kathy Callaghan

**Magazine Round Robins:**

Meryl Opie

RoundRobin "at" KapitiGen.org

**Meeting registrar:** Donna Bridgeman

**Equipment Support:**

Lindsay Olsen backup up Lorna

**Catering:** Judy Olsen

**Ink cartridges:** Jill Craig

**Schools project:** John Glover

### Interest Group Facilitators:

**Australian:** Deborah Shuker

OzSIG "at" KapitiGen.org

**Legacy Users:** Gerald Twiss

Gero "at" ihug.co.nz

**DNA:** Lorna Henderson

**Roots Magic:** Lorna Henderson

RootsMagic "at" KapitiGen.org

Portfolio descriptions and current holders are listed on our web site - in the **Who Does What** section of the "About" menu.

### Used ink cartridges

Please continue to bring your empty cartridges to the monthly Branch meetings.

They will be handed on to Jill Craig, our used- cartridge collector.

### Newsletter contributions.

Deadline: Saturday after 1st Wednesday of month.

Please send copy to: [editor "at" KapitiGen.org](mailto:editor@KapitiGen.org)

Photos welcomed for illustration - resolution of 300dpi or higher.

Next meeting  
November 22nd 2016

End of Year Function  
DON'T MISS IT!