

Convenor's Comment

Remember to check our website <http://KapitiGen.org> for additional information on events, Branch, Interest & User Groups, and any late changes.

Inside this issue:

Convenor's Comment	1
August meeting	2
Family History Month How to notes.	2
Visit to Archives NZ	3
Links to Facebook info.	3
APFHC news	4
Round Robins	4
Dates for your diary	5
Interest groups	5
Facebook for Genealogy	6
From the Committee	7
From the librarian	7
Branch information	8
Membership	8

Kia ora everyone.

I do hope that all is going well with your family history research – be it backwards, - or forwards (as mine has been!).

The first weekend in September brought with it the culmination of two years of my research, and many months of planning, as 70 descendants of John and Ellen DESMOND of County Cork, Ireland, gathered here in Waikanae at El Rancho, to celebrate 170 years since their arrival in NZ.

Of the seven sons of John and Ellen only four married, and only three went on to produce other generations. This was the first ever (re?) union of all three branches of the family. The final tally of descendants in the family tree (but I know there are still more out there that I haven't found yet) is 458. The gathering was a huge success. The 36 out-of-towners started arriving at El Rancho on Friday evening, with the numbers swelling to 70 the following day.

I started the programme on Saturday with an exercise I called "Whanau Speed Dating" – a marvellous ice-breaker where I got people paired up with the person sitting behind them. After 5 minutes they had to move along to the next person and so on. It was pretty chaotic, but feedback given later suggested that everyone had a ball, and it certainly achieved the goal of getting people mixing with others they didn't know.

I had earlier put out a general invitation for people to bring along an object of interest to the family, so the rest of the morning was given over to folk presenting a talk about their chosen object. I arranged for a photographer to come after lunch, so we now have some beautiful photos of the event.

Sunday was more relaxed day, and to finish off we attended a guided tour of Mount Street Cemetery, the first NZ Roman Catholic cemetery in Wellington, which is where John and Ellen are buried. All in all, it was a major undertaking to organise, but it was more than worth every new worry line and the many sleepless nights!

As we are now into September it is time to start thinking about our Christmas Raffle which will be drawn at our November meeting. Everyone was so generous last year that we were able to put together three hampers! I'll never forget the image of Bev Chappell struggling to carry home the huge first prize hamper basket! She has returned the basket to us for this year's raffle, so please, could we have the same level of support again this year? It would be marvellous if we could maybe put four hampers together this time!!

Stephen Sherring will be collecting the items this year, so please either bring your goodies along to the September and October Branch meetings or leave them with a committee member. Thank you again for your wonderful support!

I'll be away now for a couple of months, visiting family in Europe, so I'll see you at our end of year Branch meeting in November.

Hilary

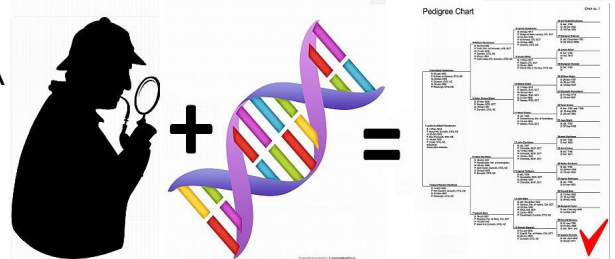
This month's meeting is on Tuesday September 27th 7-9 pm

How to be your own DNA detective!

September Branch Meeting

When: September 27th at 7-9pm
Where: Kapiti Community centre
What: **How to be your own DNA Detective!**
 Lorna Henderson will show you how to power-up your family history using DNA

How to: use our newly installed 'The Genealogist' to get tithe maps of England and Wales - by Frances Braddick



Meeting convenor: Ian Brooking

Branch news

Contributions wanted!

We are hoping to get plenty of contributions to fill the Christmas hamper(s) for our end-of-year raffle. What is needed? Anything that you would like to see/eat/drink, if you were lucky enough to buy the winning ticket!

Spreading the word!

Following the comprehensive talk to our Branch meeting on Facebook for Genealogy, Donna Bridgeman was interviewed by Lynn Freeman for National Radio and asked to speak to the Porirua Branch.

Bill McKeich has taken on the request to help with a project for Kapiti College's activities week focusing on WWI and Clive Palmer gave an illustrated talk to a local Probus group. We've also had a request to speak to a retirement village in Waikanae. Well done all!

Coming up

Irish Soldiers discharged from the Imperial Military Forces in early colonial New Zealand

by Brad & Kathryn Patterson

This talk focuses on Irish servicemen opting to take their discharge from the Imperial Regiments in New Zealand prior to 1870. The authors have studied the life histories of over 1,250 individuals, drawing from published and manuscript records, newspapers, and not least materials provided by family historians. How mobile were these folk? Did they marry and establish families? What civilian occupations did they take up, and what was the extent of their post-discharge economic success? What roles did they play in the communities of which they became part?

Amongst Brad's many roles, he is a Research Fellow, author, and vice-president of the Irish Studies Association of Australia and New Zealand. Kathryn is a Research Associate, and amongst her many past roles she was Director and Chief Archivist of Archives of New Zealand.

FMP releases Victoria Passenger lists

[Findmypast](#) has announced its largest release of Australian records, giving first-time online access to records from one of Australian history's most exciting periods - the Gold Rush. Released in partnership with FamilySearch and Public Record Office Victoria (PROV), the 3.3 million records consist of [Victoria Coastal Passenger Lists spanning 1852 to 1924](#), and can be found on findmypast.com.au.

During the Australian Gold rushes the population of Australia exploded; in 1852 alone, 370,000 immigrants arrived in Australia, and 1.7million people had made the journey by 1871. (*Mass migration is not new!!*)

Tour of Archives New Zealand

A group of 17 ventured down to Wellington to enjoy another informative tour of Archives NZ. For the majority it was their first visit to Archives NZ and they came away buzzing with new information and exciting possibilities for avenues of research. After the tour the ever obliging staff at Archives NZ helped them to register for a Readers Card, so that they can now order items from home. You can order five items at a time.

We were reminded again of the wide variety of items available through Archives NZ. More and more items are being indexed making documents easier to find. Of course most of the items have been there all along, but not easily searched for. More are being added regularly so go back and search again for your ancestor's name. You never know what you will find! Frances Braddick found some letters from 1890 in regard to one of her ancestors buying land. I found a letter written by my great grandfather in 1893 applying to become a Policeman in Wanganui.



Sadly some things get caught up in the ever tightening web of Privacy Law. *Intention to Marry* notices have been caught in this web. It has been decided that *Intention to Marry* information now comes under the same restrictions as Marriage Certificates, so you can no longer look at the *Intention to Marry* register for marriages less than 80 years ago! That is a big loss.

Gone are the ancient and bulky microfilm readers. These have been replaced with the latest microfilm readers from which you can save to memory stick or print, and are of a much clearer quality. Coroner's reports (subject to restrictions) are one of the items on microfilm. These are usually handwritten, so not always easily read. When looking for the probate of an ancestor, take a look first in <https://familysearch.org> as the LDS are indexing these all the time. It will save you a trip to Archives. Wellington based probates have not made it to Family Search yet, but it will happen. They have been digitised but not indexed yet. You can find them by year of registration, but you have to scroll through all the probates for that year.

Kathy Callaghan

Help with searching Irish records

Jenny Martin, LNI Irish Interest Group, has contributed the following information:

Great news! The Irish Births-Marriages-Deaths have been released and are FREE to search.
<http://www.irishgenealogynews.com/2016/08/online-launch-irish-birth-marriage.html?m=1>
<https://www.irishgenealogy.ie/en/>

Here is another site that may be able to help you. <http://www.irelandxo.com/ireland-xo/message-board>

You have to register and there is no subscription but you may give a donation if you so wish.

First click on 'Log in' at top right and then register if you haven't already.

Please read RESOURCES first as this will explain how the site works.

Then select your parish and post questions that others may answer for you.

IMPORTANT: When posting your question put the names of those you are seeking in the subject line as this makes it easier to scroll through listings. Nothing more boring than seeing a lot of "I am looking for" and having to open the post to see who? Good luck and have fun searching.

ScotlandsPeople will be offline **from 23.59 (BST) on Wednesday 21 September until Monday 26 September**. This downtime is essential as we work towards the launch of our new ScotlandsPeople website.

APFHC News



Help instructions for the above program are now on our website under **Membership > Members only**.

Help Sessions

Bev Chappell organises sessions to help with research for the public and members on Wednesday mornings from 10-12am at the APFHC. Volunteers to help with these sessions are always welcome and appreciated by those needing assistance.

Research Assistance

Apart from the weekly Wednesday morning sessions, members needing assistance with their research can use the KapitiGen Forum form on our website (<http://www.kapitigen.org/resources/research/genforum/>). Your request will be passed on to someone who has expertise in that area.

New Resource

We have just added a new resource to the computers at the APFHC - "**The Genealogist**". See <https://www.thegenealogist.com/coverage/> for a list of what our diamond subscription covers.

Please note that we only have a single subscription, so even though you can access it from any one of the six PCs, please check that nobody is using it on one of the other PCs before firing it up. Happy searching!

Additional NZ records.

Overcome the lack of wildcard searches of our Department of Internal Affairs BDM indexes by using our FindMyPast subscription at the APFHC to find your NZ ancestors, in the same indexes.
Lorna Henderson

Computer Password at the APFHC

The APFHC computer password changes regularly: check the red folder in the drawer. Members need to get the cupboard key from the library Welcome desk. We also ask that you sign the blue sign-in book found in the drawer - such statistics help us when applying for grants. Please replace the cover on the computer when you leave and lock the keyboard in the cupboard.

Printer, Paper and Toner

Please remember that you are asked to contribute 10c. per copy for the printing service provided. This amount does not even cover the cost of the toner used. Where possible use memory sticks instead to record the results of your research.

Computers

If you are researching and do not need the help of the volunteers, please consider coming at a time other than the 10 to 12 time slot on Wednesday mornings, when use of the computers is at a premium.



Round Robins

If you wish to subscribe to either of our Round Robin magazines, contact Meryl Opie at ([RoundRobin "at" KapitiGen.org](mailto:RoundRobin@KapitiGen.org)) Further details on our website under [Resources > Round Robins](#).

Subs \$15 per year (starting Jul/Aug) to either Family Tree magazine or Who Do You Think You Are.

This is a really good way of keeping up with the latest news and having access to interesting articles without having to subscribe to the magazines. They all have a wealth of ideas and information

When the 'round robin' subscribers have finished with them, the magazines are put into folders in our library at the APFHC. So do check them out. Most articles do not date.

Dates for Your Diary

Kapiti Genealogy

Venues

APFHC: Alison Procter Family History Centre, Ground Floor, North West Corner Paraparaumu Library

KCC: Kapiti Community Centre, Pak 'n Save Hall, 15 Ngahina St, Paraparaumu

All Kapiti events are also in the [programme information on our website](#), both in a downloadable document and on the calendar.

September 27th: Tuesday 7pm (KCC) Monthly meeting . Details on page 2.

Every Wednesday: 10 a.m. to noon. Experienced researchers on hand to help you use our resources at the APFHC and further your family tree. Six computers available, all with Ancestry, and worldwide FindMyPast. - and now The Genealogist (see page 4). Public and members welcome

Interest Group meetings (see [Programme>Interest Groups on our website](#) for further details)

Thursday 13th October: Australian interest group (APFHC) 10 to 12 noon

Saturday 19th November: Roots magic group at Kapiti Community Centre., 2-4pm.

Saturday 8th October: DNA interest group , 2-4pm at Lorna's.

Saturday 29th October: NZ Kapiti Legacy Users Group, 1- 4pm at the Kapiti Community Centre.

Kapiti Branch members might also be interested in the following:

See page 6 for details of the SLC2NZ retreat weekend. A real opportunity to get expert advice and time to work on your research in a stimulating environment.

Interest Groups

Australian

Second Thursday of every month from February to December.

Next session **Thursday October 13th** for help with any Australian research. 10-12am at the APFHC.

Legacy Users

Our meetings are the last Saturday of every second month from February to October. Everyone is welcome.

Next meeting **Saturday October 29th** at the Kapiti Community Centre. Cost \$3, pay at the door. Tea and coffee available.

Please note there will be a full day session to end the year on **Saturday November 26th**. Contact Gerald Twiss [Gero "at" ihug.co.nz](mailto:Gero@ihug.co.nz) for more details.

Roots Magic group

Meets 3rd Saturday every 2nd month at the **Kapiti Community Centre**, from 2 - 4pm, doors open 1:30pm. \$3 to cover costs/ refreshments.

Our September meeting covered Named Groups (and also extracting a tree from FamilySearch)

Last meeting for the year is on **Saturday 19th Nov 2-4**, main topic: Sources: free form or templates? Bring along your questions and useful tips.

First meeting for 2017 will be in March.

Email [RootsMagic "at" KapitiGen.org](mailto:RootsMagic@KapitiGen.org) for enquiries/ suggestions.

DNA

Informal (free) 2-monthly group for anyone interested in adding DNA testing to their genealogy toolkit.

Next meeting **Saturday 8th October 2-4pm**.

Lorna 04 293 7771

All questions welcome.

Has anyone had any success from loading their DNA to MyHeritage?

<http://blog.kittycooper.com/2016/09/myheritage-dna-matching-is-here/>

<http://dnasurnames.blogspot.co.nz/2016/09/myheritage-dna-discoveries.html>

'Hooked on Genealogy' comes to Auckland



Have you ever thought you would love to research in Salt Lake City?

Hours of concentrated research with experts?

Well - not Salt Lake City, but Auckland City!!

No long flights! No worry about luggage

Bringing SLC 2 NZ!!

A chance to have your family the subject of concentrated 'pressure cooker' research!

A long weekend Genealogy Retreat!

Email SLC2NZ@gmail.com to claim a place

& for more information

Chance to win a week's free accommodation in Salt Lake City!



SLC 2 NZ

October 21-24th

Collaboration, Corroboration, Coordination!
Retreat weekend

'Salt Lake City 2 New Zealand'

The fifth SLC2NZ is to be held Labour Weekend at a motel on Great South Rd, near Newmarket.

Jan Gow, who has attended many Hooked on Genealogy research weekends in Salt Lake City, wanted to recreate for us the chance to research from early morning to late at night; the chance to have expert facilitators on duty through most of that time; the chance to access many pay2view web sites for free; the chance to work together (collaborate), to check the accuracy of previous research (corroborate), to organise the sourcing of documents and the recording of the research process (coordinate).

During this weekend sites like Ancestry, Findmypast, My Heritage, The Genealogist and FamilyRelatives are supporting the weekend with free access.

Some other pay2view sites will give free access on one computer (like ScotlandsPeople)

Some of the attractions include:

- Spot prizes - subscriptions, software, hotel accommodation - distributed on a completely random basis.
- Snappy lectures on using pay2view websites. You will go home knowing how to get your money's worth!!
- BYOD (bring your own device) event - extra computers are available if needed.

You will go home having learnt to research effectively and thought about the discipline you need in your own research, especially in recording your searches. We hope you will go home feeling you are able to give lectures to your fellow genealogists and local community!

It will be a really fun and exhilarating research weekend! A chance to use your computer for collaboration, for corroboration and for coordination! You will be ready to organise your family research project.

Go to <https://www.familysearch.org/learningcenter/lesson/doing-research-in-real-time-a-collaborative-approach/648> and watch Genealogical Barn Raising - Doing Research in Real Time. This will give you an idea!!

Just **15** people can attend, to enable one-on-one sessions, so places are limited.

Early Bird registrations close **10 September**; deposit is \$150, which gives entry to the Early Bird prize draw.

After 10 September, \$300 deposit with registration. Balance due 1 October.

The weekend is run on a cost recovery basis. The large outlay is in hiring a conference room and facilities for four days, so the cost is determined by the number attending.

In the past, costs have been around \$300-\$400 plus accommodation and travel expenses. Supply your own breakfast, but lunch and dinner are included - as is internet connection. Your spot prizes may offset most of the cost!! Though if you win the free weeks accommodation at the Plaza Hotel in SLC, it just may involve you in more expense!

<https://www.facebook.com/HookedonGenealogy>. Email SLC2NZ@genealogy.net.nz to receive the registration form and charts to fill in to start the research process.

SLC2NZ Retreat Weekend, 21-24 October 2016, Great South Rd, Newmarket,

From the Committee

This month's meeting:

Tuesday September 27th 2016

7:00pm: supper

7:30pm: meeting starts.

Supper roster: D - H

If your surnames starts with the above letters, your help with the supper would be appreciated.

Committee meetings: 7.30pm, 1st Wednesday of months February - December.

Welcome to new members:

Sheryl PULSFORD and Valerie CAMERON

Please make yourself known to other members at the monthly meetings. It's our chance to get to know you and share experiences, and your opportunity to find out where you can get help with your story. We hope you'll enjoy our facilities and get great benefit from your membership.

Welcome back Bill!

Committee members are delighted that Bill McKeich has agreed to be co-opted back onto the Committee. He is helping John Glover with the Schools Records Project by doing the initial liaison with the school.

The Genealogist -

Don't miss Frances Braddick's 'how to' this month on extracting tithe maps from our newest resource - exciting for those researching land ownership in 1800s England and Wales.

Go to <https://www.thegenealogist.com/coverage/> for a complete list of what our diamond subscription covers. Along with the standard UK vital records (births, deaths and marriages) and census data, it also has specialised records only available on that site. Just some of the collections available, in no particular order, are:

- *Scanned copies of the Railway Gazette,
- *Tithe map collections - complete for England and Wales (<https://www.thegenealogist.co.uk/featuredarticles/2015/the-tithe-maps-project-317/>),
- *Parish records for Norfolk (indexed and images),
- *Transcriptions for Worcestershire and Essex Parish registers - and many others.

Don't forget to check that, nobody else is using our one subscription before opening, although it can be accessed from any of the six PCs .

School records transcription project

This project is playing an essential part in digitizing our local schools' records.

If you are willing to take part in this project contact the coordinator, John Glover. He will be pleased to hear from you.

([pamandjohn "at" paradise.net.nz](mailto:pamandjohn@paradise.net.nz))

Help with Research

Sue Greene, who has been our Research Officer for several years is no longer able to take on serious genealogy research. Many thanks, Sue, for the valuable help you have given to many people with a variety of requests.

If anyone is willing to assist with research queries in one or more specific areas/ countries, please contact a member of the Committee. Your help will be appreciated.



Late breaking news and events that we find out about between newsletters are added to [our website](#). By logging into the website you are able to post events of relevance and interesting links yourself as well as update your own contact details.

Kapiti Genealogy on Facebook

Check out [our facebook page](#). You don't need to be a registered user of facebook to read it, simply click on the link if reading this on your computer, or search for Kapiti Genealogy facebook.

Please let Kathy Callaghan have any suggestions on how to make the best to use of this medium. If a Facebook user, do remember to click "like".

How to?

Please let the Committee know what topics you would like covered in our meeting "How to" sessions.

It's a chance to find out how to resolve any difficulty you're having with a programme or make the most of the extensive facilities we have available. Nothing is too simple or odd. Please give us your ideas.

Keep on searching!





Branch meetings:

4th Tuesday, Jan - Nov

Time: 7pm, supper / research
7:30pm, meeting start

Branch Committee

Convener: Hilary Cunningham

Phone: 04 971 7986

Convenor "at" KapitiGen.org

Secretary: Denice McCarten

Phone: 905 8266

secretary "at" KapitiGen.org

Treasurer and Membership:

Lorna Henderson

Phone: 293 7771

treasurer "at" KapitiGen.org

Programme & Activities:

Ian Brooking

programme "at" KapitiGen.org

Librarian: Beverley Chappell

Member: Bernard Mc Manus

Newsletter Editor: Sheila Jolley

editor "at" KapitiGen.org

Computer Liaison: Frances Braddick

Webmasters:

Lorna Henderson & Ian Brooking

Sound System: Ian Brooking

Schools liaison: Bill McKeich

Email links

Throughout the newsletter email links are clickable. Remove the "at" and insert the @ symbol before sending.

Membership

We welcome new and returning members. Our annual subscription is \$25.

Please refer to the website (<http://www.kapitigen.org/2016/01/membership-renewals-201617/>) for joining and payment instructions.

Ex-officio committee

Trip organiser: Kathy Callaghan

Magazine Round Robins:

Meryl Opie

RoundRobin "at" KapitiGen.org

Meeting registrar: Donna Bridgeman

Equipment Support:

Lindsay Olsen backup up Lorna

Catering: Judy Olsen

Ink cartridges: Jill Craig

Schools project: John Glover

Interest Group Facilitators:

Australian: Deborah Shuker

OzSIG "at" KapitiGen.org

Legacy Users: Gerald Twiss

Gero "at" ihug.co.nz

DNA: Lorna Henderson

Roots Magic: Lorna Henderson
(04) 293 7771

Portfolio descriptions and current holders are listed on our web site - in the **Who Does What** section of the "About" menu.

Used ink cartridges

Please continue to bring your empty cartridges to the monthly Branch meetings.

They will be handed on to Jill Craig, our used- cartridge collector.

Newsletter contributions.

Deadline: Saturday after 1st Wednesday of month.

Please send copy to: [editor "at" KapitiGen.org](mailto:editor@KapitiGen.org)

Photos welcomed for illustration - resolution of 300dpi or higher.

Next meeting
October 25th 2016

Irish soldiers discharged in NZ
from imperial regiments pre 1870
by
Brad and Kathryn Patterson