

Editorial

Remember to
check our
website
[http://
KapitiGen.org](http://KapitiGen.org)
for additional
information on
events, Branch,
Interest & User
Groups, and any
late changes.

Contents

Editorial	1
June Branch meeting	2
Branch news	2
NZSG Conference 2017	3
Past and Future events	4
Solving login problems	4
Dates for your diary	5
Interest Groups	5
NZSG Birthday bash	6
Round Robins	6
Information for new members	7
Branch contacts	8
Membership.	8

Hello there!

As a new convenor has yet to be appointed, I have taken the liberty of filling the gap.

On behalf of the Committee, I would like to thank Hilary for the leadership she has shown in her two year stint as Convenor. She was an inspiration, suggesting new ideas and always ready to play a full part in any activities. She also did the sometimes difficult job of making decisions and answering queries. Thank you Hilary. Your contribution will be missed.

More Committee news on page 2.

Our next meeting is an interactive discussion on DNA testing and how it can be used to extend your family tree. If you have an interesting find or have managed to trace a relative using DNA, please come and tell the rest of us.

I was filled with excited anticipation when my DNA test results came back. Sadly, I did not recognise a single surname for any one of the listed 2nd-4th cousins!

I emailed a couple of the closest matches. Someone in America replied to say that her distant relatives did come from the UK but she could only trace them to other states in the USA.

However, a couple of months later I checked the list again. Lo and behold - my niece in Auckland had appeared at top. What a surprise!

Even better. The following week revealed that a cousin in England was next down the list.

I emailed her. She'd visited the Ideal Home Exhibition in London where a hefty discount on DNA testing was being offered. So she'd taken up the offer, but had no idea what it was about or how to read the results!

That test proved a relationship we discovered only recently.

Old photos left by my mother showed this 'extra woman' in all the family groups. So when I visited the last surviving aunt in the UK, I asked who it was.

'That's Millie' was all she could manage. She had no idea how Millie fitted into the family. My niece did some research and found that Millie was my grandfather's daughter from a previous marriage we knew nothing about. Our English cousin is Millie's great granddaughter!

Good hunting. Do come and share your stories at the next meeting. See page 2 to contact Ian Brooking.

Sheila

Next meeting
June 27th 2017

DNA for Genealogy
Share your stories of
how DNA has
expanded your family

June Branch Meeting

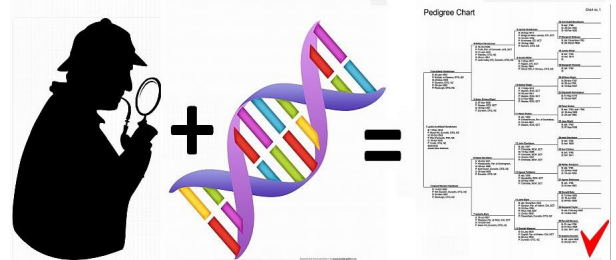
When: June 27th 2017 at 7-9pm
Where: Kapiti Community Centre
What: **DNA for Genealogy.**

Lorna Henderson, our DNA Interest Group facilitator, will lead a discussion on how DNA can be used to build or verify your family tree.
 Come and share your stories of how DNA testing has helped you.
 All contributions welcomed!

Please contact ian.brooking@clear.net.nz before the June meeting date if you wish to take part in this session – no contribution is too small!

Conference report by Donna.

Meeting Convenor: Ian Brooking
Supper roster: A – E



Branch news

The Committee is very sorry to lose Hilary Cunningham who has been our Convener for the past two years. Bill McKeich has also resigned due to heavy commitments elsewhere. Thanks to both of you for your valuable contributions. Hilary will be helping Stephen with our popular raffle, which she instigated.

A warm welcome is extended to three new Committee members. You will all have met Donna Bridgeman in her role at the 'label table' as you enter the meetings and will have heard her speak last year about her work with Facebook groups. We are delighted that Ian Barbour, a relatively new member, and Gerard Denton, of Irish descent have agreed to join the Committee.

Meryl Opie, who has collated the Round Robins for several years is resigning from that position. Many thanks for your work and dedication Meryl.

For those of you not familiar with the Round Robins - Kapiti Genealogy subscribes to both 'Family Tree' and 'Who do you think you are?' magazines, which are circulated to those on the Round Robin lists.

Subscriptions for each magazine are \$15 a year and are well worth while. When the magazines have completed the Round Robin, they are put into our library for others to read.

Subscriptions are due in July, so now is a good time to get onto the list. (See also page 6)

Thanks to is Bev Chappell who is taking over. Contact her on RoundRobin "at" KapitiGen.org

Don't miss the next Overview Session

When: Thursday 29 June, 1:30pm – 3:00pm

Where: Learning Centre, Paraparaumu Library, Iver Trask Place, Paraparaumu

What: Using websites findmypast and ancestry.com - particularly for Census records.

Hint from Deborah Shuker

Findagrave is a worthwhile site. www.findagrave.com/cgi-bin/fg.cgi?page=gsr&GScid=2609850

Each entry has Headstone photo, transcribed Inscription, Plot number and GPS location.

Some also have a mini pedigree of immediate family, photos and other notes. A treasure trove of information if one of your family is buried here.

Deborah

NZSG Conference 2017

This year the annual NZSG Conference was held at Alexandra Park Function Centre in Auckland over the three day Queen's Birthday weekend.

The conference coincided with the 50th anniversary of the Society. To celebrate this significant milestone event the organisers had gathered an excellent array of speakers from NZ and overseas who entertained an audience of possibly 500 or even 600 genealogists over the three days. I thoroughly enjoyed the conference and gained a lot of knowledge.

The presenters and topics covered were:

Ian Waller (UK) - five presentations covering aspects of *English genealogy*;

Judy Russell (USA) - four presentations covering legal issues and advanced genealogy research techniques and considerations;

Diah Southard (USA) - four presentations covering all aspects of DNA to assist your genealogy research from beginner level through to advanced;

Dick Eastman (USA) - four presentations on *Using Online Genealogy Programs, Mobile Apps for Genealogy, Using MyHeritage.com effectively, and Finding Genealogy eBooks For Free And For Pay.*

Fintan Mullan and **Gillian Hunt** (Ireland) - shared five presentations covering various aspects of Irish genealogy research;

George Harvey (NZ) - presented on 'how to use key FamilySearch tools effectively';

Neville Thomas (NZ) - 'The British in India';

Jordi Garcia and **Graeme Wilson** (NZ) - *New Zealand military history*;

Fiona Brooker (NZ) - presented on *digitised newspaper collections as well as organisation of your family photographs*;

Seán Brosnahan (NZ) - presented on Irish and Scottish families that settled in New Zealand;

Christine Edney (NZ) - *Records held by the New Zealand Defence Force*;

Jason Reeve (NZ) - Ancestry.com's Content Manager for Australia and New Zealand, spoke on *What's New at Ancestry.com* and *An Introduction to AncestryDNA*.

To accommodate all these speakers within the three days, the conference ran three streams in parallel; it was often a challenge to decide which presentation to attend.

At the conference venue there was also a large exhibitors' hall where one could occupy oneself in the breaks between lectures and at the end of each day. There were twenty stands to accommodate

FamilySearch, Ancestry, Stories Kept, MENTIS Ltd, My Heritage, Beehive Books, Unlock the Past, Auckland City Libraries and Online Cenotaph, Wales NZ Family History Society, NZ Army Museum Waiouru, NZDF Personnel Archives and Medals, New Zealand Society of Genealogists, DIA - Digital NZ - Papers Past, DIA - Alexander Turnbull Library, DIA - Births, Deaths and Marriages, DIA - Archives New Zealand, Your DNA Guide, Memories In Time.

More information available at https://www.genealogy.org.nz/Exhibitors_1612.aspx.



If you missed the 2017 conference there is always the 2018 conference to be held in Christchurch from the 1st to 4th June. Details may be found at https://www.genealogy.org.nz/2018-conference_1604.

Bernard Mc Manus

Past and future events

May Branch Meeting - Special Interest Groups' "speed dating" session.

This meeting was well supported with speakers from our various Special Interest Groups: Legacy Users Group (Gerald Twiss), Australian Interest Group (Deborah Shuker), RootsMagic Users Group (Lorna Henderson) and DNA Interest Group (Lorna Henderson).

The following visitors made interesting contributions:

Lower North Island Irish Interest Group (Jenny Martin. Contact: jenmartin"at"paradise.net.nz)

Greater London/English Interest Group (Annette Gazley. Contact: Ann Ball, Ball"at"xtra.co.nz)

Maori Interest Group (Brenda Joyce. Contact: bjoyce"at"xtra.co.nz)

Thanks to all those who contributed, and helped to make it an enjoyable and informative evening.

Toku Whanau: Sharing Stories

- What is my family story? How do I find it?

As part of the Paraparaumu Library's Matariki celebrations, they are organising an informal panel to share stories about their family tree/whakapapa discoveries. It will be held at 10.30am, **Friday 28 July** in the Paraparaumu Library, and will serve as a good lead-in to August's Family History Month.

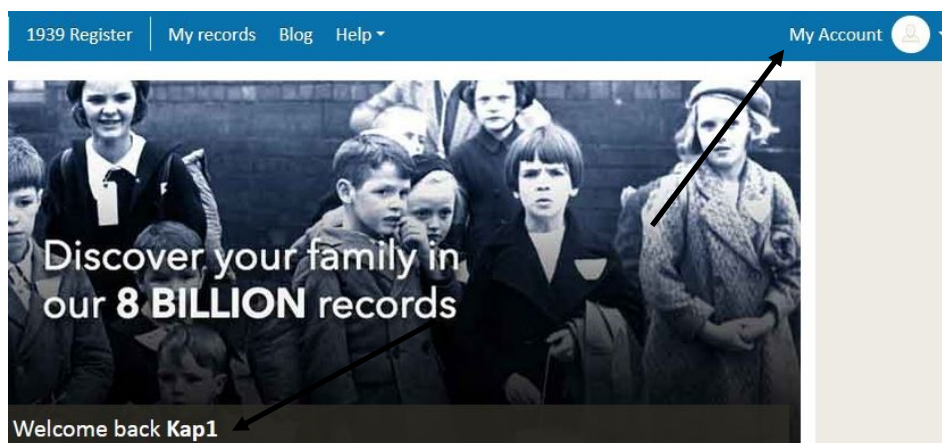
If you would like to contribute to this panel, please contact Rosemary.McCarthy"at"kapiticoast.govt.nz

"Find My Past" and "The Genealogist" login problems

Both the "Find My Past" and "The Genealogist" subscriptions on the APFHC computers belong to our Kapiti Genealogy group, and for them to work, they have to be signed in.

Normally, the 'Remember Me' function on the browser does just that, and automatically signs you in. You can check whether you are signed in by looking at the top right-hand side of the screen.

In **FMP**, it will say "My Account", as well as showing a welcome message.



If you are **not** signed in, you will

see '**Sign In**'. If this is the case, simply click on "Sign in" and you will be presented with a form to fill in. If the form is completely empty, just type the letter 'K' into the Email address box and the full remembered email address should appear, along with the encrypted password: Now click "Sign in" and you should be back in action.

Similarly, for **The Genealogist**. Simply click on the 'Sign in' button and you should see the fully populated email address and password. You can now Sign In.

If you continue to have a problem, try one of the other computers – they all seem to behave slightly differently.

Happy searching!

Ian Brooking

Dates for Your Diary

Kapiti Genealogy

Venues

APFHC: Alison Procter Family History Centre, Ground Floor, North West Corner Paraparaumu Library

KCC: Kapiti Community Centre, Pohutukawa Room, 15 Ngahina St, Paraparaumu

All Kapiti events are in the [programme on our website](#), both in a downloadable document and on the calendar.

Monthly Branch meeting: June 27th 7-9pm—details pages 2

Every Wednesday: 10 a.m. to noon. Experienced researchers on hand to help you use our resources at the APFHC and further your family tree. Six computers available, all with Ancestry, FindMyPast and The Genealogist. Public and members welcome

Thursday 29th June: APFHC Overview Session, 1.30 - 3.00 pm. Using websites, particularly census results.

Saturday 1st July: APFHC – Member's help session, 1 – 3pm

You may also be interested in the following:

Friday 28th July: Toku Whanau. See page 4 for details.

Tuesday August 15th at 12 noon, NZSG is holding a national lunch at various venues around the country to commemorate the founding of the Society.

Kapiti Genealogy will be joining Otaki Branch. See page 6 for more information.

Interest Group meetings (see [Programme>Interest Groups on our website](#) for further details)

Saturday 15th July: Roots magic group at Kapiti Community Centre., 1.30-3.30-pm.

Saturday 10th June: DNA group at Lorna's. 2-4pm

Thursday 13th July: Australian interest group (APFHC) 10 to 12 noon

Saturday 24th June: NZ Kapiti Legacy Users Group, 1- 4pm at Kapiti Community Centre.

Interest Groups

Australian

Second Thursday of every month from February to December.

Next session **Thursday July 13th 2017** for help with any Australian research.
10-12am at the APFHC.

DNA

Informal 2-monthly group for anyone interested in adding DNA testing to their genealogy toolkit.

Our June session covered the processes involved in downloading your FTDNA atDNA results. We then started the process of triangulation by using a known tested relative and the In Common With (ICW) facility to allocate matches to a group with a known "side"/ancestral path.

To be continued.

Next session: **Saturday 12th August 2-4pm** at Lorna's (04 293 7771).

Topic suggestions may be made via the form at <http://www.kapitigen.org/programme/interest-groups/dna/>

Legacy Users

Meetings are the last Saturday of every second month from February to October. Everyone is welcome.

Next meeting **Saturday 24 June 2017**, 2:00 to 4:00pm. Kapiti Community Centre. Doors open 1- 4.30pm. Tea and coffee available. Cost: \$2
Contact Gerald Twiss [Gero "at" ihug.co.nz](mailto:Gero[at]ihug.co.nz) for more details.

Roots Magic

Two monthly meetings at the Kapiti Community Centre.
Next session: **Saturday, 15th July**, 1:30 to 3:30, doors open at 1pm, \$3 door fee.

<http://www.kapitigen.org/programme/interest-groups/rootsmagic/> for contact details, request a topic for discussion etc.

Still no word on the promised (optional) link from RootsMagic to/from Ancestry.

Noted that FamilyTreeMaker2017 is still not out of beta testing for this either.

Bring along your suggestions on getting the most from RootsMagic, and/or your questions.

NZSG Birthday bash - everyone welcome



NZSG 50th Anniversary Lunch 15 August 2017:

The NZSG is planning to hold a lunch with speakers in Auckland, which will be beamed live to other branches. So that we can all feel part of this lunch, come and celebrate with us.

The **Otaki Branch and Kapiti Branches** plan a shared lunch (finger food, pot luck) for all members of the Otaki and Kapiti Genealogy Groups from **12.00 – 3.00pm**.

The venue is Hadfield Hall by All Saints Church in Te Rauparaha St, Otaki.

12.30pm - While lunch is served a live slideshow from the NZSG photographic archive will be transmitted and shared. We also plan to display and show images from both of our own branches' history.

1.30pm on - Speeches by NZSG Board Chairman, the National compère and any invited guests (Details of speakers and topics to follow soon).

Do come and join in, meet new friends, and make it a social occasion for all.

Advance notice of **Wellington Family History Month** event on 5th August.

<https://www.genealogy.org.nz/data/media/documents/Event%20Flyers/2017-08%20Wellington%20FH%20Open%20Day.pdf> More details in next newsletter.

Round Robins

The **Dec 2016 FamilyTree magazine**, which should be available in our library binders, had some interesting articles:

A reminder entitled "5 steps to rock-solid research" by Barbara J Starmans about the Genealogical Proof Standard - along with a handy note about avoiding confirmation bias - "the tendency to interpret new evidence as confirmation of one's existing beliefs or theories" (Oxford Dictionary)

One of the 5 steps is a reasonably exhaustive search - *ie* don't stop at the first person of the right name, place or age there may be others nearby.

If you haven't heard about, or need a refresher on the Genealogical Proof Standard, you may also be interested in checking out <http://www.bcgcertification.org/resources/standard.html> or a handy FamilySearch blog on the same topic

<https://familysearch.org/blog/en/genealogicalproofstandardpart1/>

The same issue has an article by Chris Paton on "10 un-missable sources for Irish ancestors"

If you wish to subscribe to either of our Round Robin magazines, contact Bev Chappell at ([RoundRobin"at" KapitiGen.org](mailto:RoundRobin@KapitiGen.org)) Further details on our website under [Resources > Round Robins](#).

Subs \$15 per year starting Jul/Aug) to either Family Tree magazine or Who Do You Think You Are?

This is a really good way of keeping up with the latest news and having access to interesting articles without having to subscribe to the magazines. They have a wealth of ideas and information

When the 'round robin' subscribers have finished with them, the magazines are put into folders in our library at the APFHC. So do check them out. Most articles do not date.

Information for new members

Branch meetings are held on the fourth Tuesday of the month from January to November.

This month's meeting:

Tuesday June 27th 2017. Details on page 2.

7:00pm: supper

7:30pm: meeting starts.

Supper roster: A - E

We have a roster to help our supper organiser, Judy Olsen. If your surname starts with the above letters, she would appreciate your assistance. (Don't worry - we use the dishwasher provided!)

Committee meetings are held at 7.30pm on the 1st Wednesday of months February - December.

Following the acceptance of the new NZSG rules, all Branch members are eligible for Committee.

Contact details of current members are on page 8 if you want further information.

Welcome to new members :

Elaine HOPEWELL and Rosemary McCARTHY. Please make yourself known to Donna on the front table when you arrive at your first monthly branch meeting, so you can be introduced to other members with similar interests.

Help with Research

Our help sessions on Wednesday mornings at the Paraparamu Library 10-12am and on the first Saturday of every second month will give you individual help to find your way around the facilities.

(Next Saturday session is **1st July**)

Don't miss the next orientation session on **Thursday 29th June**, 1.30-3pm in the Learning Centre upstairs in Paraparamu Library. It will focus on the use of Findmypast and Ancestry websites, concentrating on censuses.

Kapiti Genealogy on Facebook

Check out [our facebook page](#). You don't need to be a registered user of facebook to read it. Kathy Callaghan would love your suggestions on how to make the best use of this medium.

School records transcription project

This project is playing an essential part in digitizing our local schools' records. If you are willing to take part in this project contact the coordinator, John Glover. He will be pleased to hear from you.

(pamandjohn@paradise.net.nz)

Facilities at the

Alison Proctor Family History Centre

The APFHC is located at Paraparamu Library. Turn right inside the library entrance and at the far end you'll see the six computers, microfiche and library. The cupboard on the right hand side of the area contains the blue and red folders mentioned below.

Computer Password at the APFHC

The APFHC computer password changes regularly: check the red folder in the drawer.

Members need to get the cupboard key from the library Welcome desk. We also ask that you sign the red signing-in book found in the drawer - such statistics help us when applying for grants. Please replace the cover on the computer when you leave and lock the keyboard in the cupboard.

Resources

We have wonderful resources on all six of our computers at the APFHC, quite apart from all the other records and books. You are encouraged to use these resources as often as you need. They are the envy of other Genealogy Societies.

All six computers have subscriptions to Ancestry, FindMyPast and access to The Genealogist, as well as free sites like FamilySearch. A microfiche is available.

If you experience difficulty in logging on to FMP or The Genealogist, please see page 4 for help to overcome this problem.

You are encouraged to save the results of your searches on a USB memory stick or send them to your own email address. We have a printer if you wish to print a hard copy. Please put 10c per copy in the honesty box on the cupboard door. Please do **not** switch the printer off.

Website login

Do remember that if you have forgotten your login to our website there is a password reset option.

<http://www.kapitigen.org/wp-login.php> which works for either your assigned username or the email address you provided to us.

Log in and explore, or update your own contact details, download the current "How to" booklet, and if a member of NZSG, the current discount code for FindMyPast subscriptions.



Branch meetings:

4th Tuesday, Jan - Nov

Time: 7pm, supper / research
7:30pm, meeting start

Branch Committee

Convener: To be appointed

Phone:

Convenor "at" KapitiGen.org

Secretary: Denice McCarten

Phone: 905 8266

secretary "at" KapitiGen.org

Treasurer and Membership:

Lorna Henderson

Phone: 293 7771

treasurer "at" KapitiGen.org

Programme & Activities:

Ian Brooking

programme "at" KapitiGen.org

Librarian: Beverley Chappell

Members:

Ian Barbour

Gerard Denton

Bernard Mc Manus

Newsletter Editor: Sheila Jolley

editor "at" KapitiGen.org

Meeting registrar: Donna Bridgeman

Computer Liaison: Frances Braddick

Webmasters:

Lorna Henderson & Ian Brooking

Sound System: Ian Brooking

Magazine Round Robins:

Bev Chappell

RoundRobin "at" KapitiGen.org

Ex-officio committee

Trip organiser: Kathy Callaghan

Equipment Support:

Lindsay Olsen backup up Lorna

Catering: Judy Olsen

Schools project: John Glover

Schools liaison: Bill McKeich

Raffle: Stephen Sherring
and Hilary Cunningham

Interest Group Facilitators:

Australian: Deborah Shuker

OzSIG "at" KapitiGen.org

Legacy Users: Gerald Twiss

Gero "at" ihug.co.nz

DNA: Lorna Henderson

Roots Magic: Lorna Henderson

RootsMagic "at" KapitiGen.org

Portfolio descriptions and current holders are listed on our web site - in the **Who Does What** section of the "About" menu.

Newsletter contributions.

Deadline: Saturday after 1st Wednesday of month.

Please send copy to: [editor "at" KapitiGen.org](mailto:editor@KapitiGen.org)

Photos welcomed for illustration - resolution of 300dpi or higher.

Email links

Throughout the newsletter email links are clickable. Remove the "at" and insert the @ symbol before sending.

Membership

Subscriptions for the current financial year became due on the 1st of April - only \$25 for the year.

Only the current cream card is now valid for accessing our resources at the APFHC.

Full payment options available at

<http://www.kapitigen.org/2017/02/membership-for-20172018/>

where the bank account for internet banking is our NEW account BNZ 02-0591-0040791-000

Next meeting
July 25th 2017

Fiona Gray
Family History Specialist
National Library