

Remember to
check our
website
[http://
KapitiGen.org](http://KapitiGen.org)
for additional
information on
events, Branch,
Interest & User
Groups, and
any late
changes.

Editorial



Family History Month

The National Library has been holding weekly talks in August for Family History Month. The last of these, entitled *Family History Research using Papers Past and Digital NZ* is on August 22nd at 5.30-7pm in the Auditorium at the National Library.

Kathy has organised two tours to Wellington for September to the visit the National Archives and Wellington CC Archives (see details page 2). It's an opportunity to do research using these resources.

Thanks to Jenny Wilson for her comprehensive summary of Jonathan Newport's talk on the Collections Archive (pages 3/4) and I really appreciate the summary that William Corbett sent of the an article on Wills and Probates from one of our Round Robin magazines. Sadly copyright restrictions would not allow its publication, but if you are looking for that type of information do refer to the article.

For members of NZSG a DNA group is starting on 30th August and thereafter on the last Wednesday of the month. This is in addition to the courses already going for beginners. (see page 4).

For something different, read Ian Brooking's find: An interesting story on The Conversation: <https://theconversation.com/he-was-horrific-nearly-two-thirds-of-family-historians-are-distressed-by-what-they-find-should-dna-kits-come-with-warnings-207430>

Lastly keep the cold out with exciting new discoveries. It's almost Spring!

Sheila

Contents

Editorial	1
Branch meetings	2
Branch News	2
Collections Archives	3
Collections Archives cont,	4
NZSG News	4
DNA News	5
Round Robins	6
A Scottish Flavour	6
Interest Groups	7
Monthly online Zoom session	7
Branch Information	8
Contacts and Venues	9

Meetings this month:
Tuesday Evening
August 22nd

'Preserving your family
history when you've
gone'

Day Meeting
Wednesday afternoon
August 23rd

August Branch Meetings

Evening meeting.

When: Tuesday August 22nd

7pm - meet and greet. Refreshments
7.30 - 9pm, main session.

Where: Coast Community Church

57, Hinemoa Street, Paraparaumu

What: 'Preserving your family history when you've gone'

Rodney King (Kilburnie Branch)

Rodney will give you options for preserving your hard work
for the next generation.

Convenor: Ian Barbour



Daytime meeting

When: Wednesday August 23rd

1.30 – 4pm

2 - 4pm meeting

Where: Waikanae Baptist Church Café, 286, Te Moana Rd, Waikanae

What: Notes from the evening meeting, followed by discussion and research.
Bring along your ideas.

Co-ordinator: Denice McCarten

Branch notices

Welcome to new members Alison Finnie, Heather Abbott and Kayne Symes-Reynolds.
We look forward to meeting you and hearing of your interests and experience.

Member interests:

Russell Herman. NZ, Australia, all of UK and Ireland. *Email: Idarkrushern@gmail.com*

William Corbett. North Yorkshire 1570-1910, Hohebeck, Germany. *Email: bandwcorbett@gmail.com*

Tours for September

Kathy has managed to arrange two great tours for September;

1. Tour of National Library for **Friday September 1 at 10.30am**.
Register by 30th August with kathycallaghan@gmail.com or 04 2970733 or 021 0452925.
2. Tour of Wellington City Council Archives for **Monday September 18th at around 10.30 - 10.45**. We have to get a bus from the railway station to near Basin Reserve, so it depends on the bus timetable. **Register as above** and please make it clear which tour you are registering for.

October evening meeting - help, please!

Our theme for this meeting is Emigration/Immigration and (worldwide) Shipping/Passenger records. We have room for more contributions and really need someone to step up to organise and chair this session. Please contact Ian Brooking on Programme@KapitiGen.org if you can help.

NZSG Update

Your committee is working on our own constitution using as a base the draft template provided by NZSG. For background information on the issues this overcomes, please refer to the document sent to you back on 16th Nov, and also loaded to our website under the Members Only content, NZSG page (<http://www.kapitigen.org/membership/members-only/nzsg/>). You will need to be logged in to view this. A copy of the revision will be distributed when ready as there will need to be a Special General Meeting for this to be discussed and voted on.

Collections Archives

Our speaker at the evening meeting this month was **Jonathan Newport, Archives NZ**.

Jonathan spoke about the Collections Search on the Archives website.

<https://collections.archives.govt.nz/web/arena#/> Collections launched in 2022, replaced Archway.

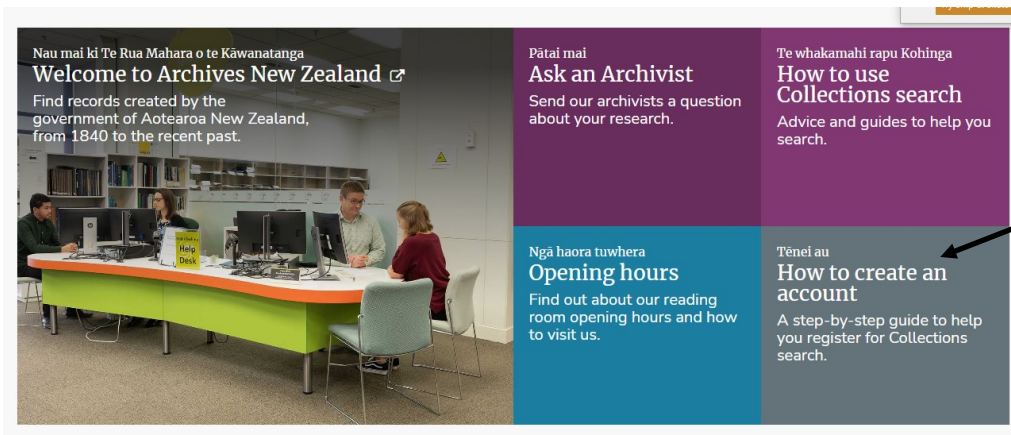
Archives are situated in Auckland, Wellington, Christchurch and Dunedin and the records are located in their respective areas. You can search the records for the specific area by using the filter button. Records held are for NZ Central Government, ministries, departments, agencies and offices. They are also held of individuals connected to Crown Ministers and Senior Public Servants.

Of particular interest to genealogists are probates, military and shipping records.

A new building is planned that will share a joint reading room with the Alexander Turnbull Library. Not all records will be kept in the new building - digital records will be at another facility. Archives Collections is not compatible with Alexander Turnbull Library Collections.

On-line registration is required to order records and pay for digitization through Collections, but not for general inquiries. Registration to Archives is free and viewing records in the reading room is free. You can take cameras or devices to photograph records but you cannot take equipment that requires contact with the original document.

Archives will scan and send records to people – there is a base charge of \$25, with additional charges for work beyond half an hour.



On the Archives Collections home page is “How to Create an Account”.

The Collections search bar works like Archway using a key word. Results can be viewed in Grid or List views. The Grid View includes a thumbnail image of the record; List View indicates restrictions on the record. Collections looks for exact years, not a range or near matches. If a letter is added to a file 30 years after the file was first created, then any restrictions restart from the last item added.

You can sort results by relevance, advance search or use the filter button which is available at the top left of the screen under the number of results found. Filters include location, restrictions, format, and series. Multiple filters can be applied.

Advanced Search is found just under the search bar on the right of your screen. There are dropdown lists in Field Name and Rule search areas. Once you have clicked on the tile there is an “Item Inquiry” on the top right. Click on that and complete the form that comes up. Cont. overleaf

Collections Archives Search cont.

Digitized records show a thumbnail image and the record title. Click on the tile to bring up information. At "View Online" the reference number beside it can be clicked on to bring up the document.



PLANK Rose Mary Ann - Auckland - Widow

[Item inquiry](#)

Entity type: Item

Code: R9375080

Years: 1945 - 1945

Box number: 677

Record number: P672/1945

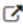
Additional description: A DIGITISED COPY is available and can be viewed free of charge on LDS FamilySearch website <https://familysearch.org/search/collection/1865481>. This probate record is not indexed by name as of yet; Select browse images - Auckland Court - then scroll to year and record no.

Location: Auckland repository

Format: Text

Item type: Physical

Access status: Open

View online: [IE49943485](#) 

Digital copy available: [Yes](#)

Access statement: Open access

Digitized pages are in PDF format. If you click on the download button on the top right of the file you can get the whole PDF File by choosing "Download Derivative Copy".

If an item is restricted you can contact the "Access Contact" for further assistance. Access Contact appears at the bottom of the information about the document.

If you are applying for Welfare Services, adoption or criminal records which may have names attached Archives staff can only advise you they cannot give out private information.

You can also search Archives on: Archway.howison.co.nz

It is an unofficial site, not supported or endorsed by Archives; does not link to Collections and you can't pay or send inquiries to Archives through this site.

Archives can be contacted at: Research.archives@dia.govt.nz

Jenny Wilson

NZSG News

NZSG members only online **DNA Group** is about to start. Meetings monthly last Wednesday of the month.

First session, 30th August. Keep an eye on the e-Kit which goes to all NZSG members.

There are also NZSG monthly videos about their resources etc, many of which are open to all to view.

<https://genealogy.org.nz/Monthly-Presentations/11303/>

NZSG Free monthly talks The sessions are on the first Tuesday and Friday of the month:

Tuesday at 10:00am and Friday at 7:30pm

There is a 50 minute presentation and then a Q&A session.

Register online at <https://forms.office.com/pages/responsepage.asp>

DNA News

NZ Police have, for the first time, and after due process, approved the use of genetic genealogy in a murder case. Remember that two companies allow Law Enforcement (LE) the ability to upload samples from crime scenes for a limited range of the most serious crimes: GEDmatch and FamilyTreeDNA. Both companies have settings on YOUR account that allow you to opt in or out of being included in LE matching.

Do review your account settings and make sure that yours are set according to your views, remembering your DNA connects you to many, many people worldwide.

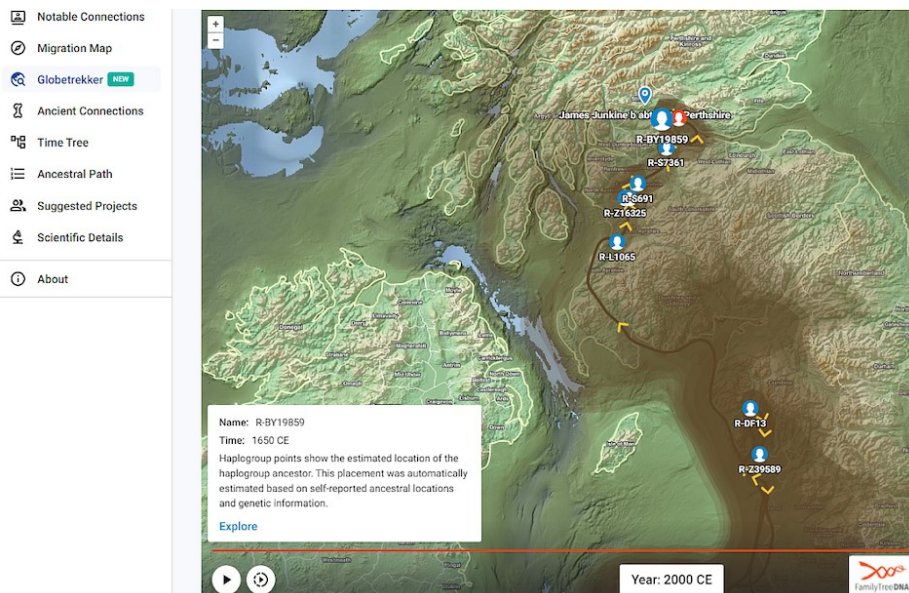
LE does NOT have any more access than you or I, the same match list information, the same struggles trying to identify common ancestors with matches, and the same problems bringing those common ancestors down to present day to identify where a match "fits".

<https://www.nzherald.co.nz/nz/cold-case-police-investigating-1980-murder-of-alicia-oreilly-to-trial-dna-tool-fbi-used-to-catch-golden-state-killer/NCQBA7A5VJAXRDOCSTNMO2XYZM/>

Don't forget yDNA. FamilyTreeDNA continues to develop tools and the accessibility of the results.

Check out its new GlobeTrekker explained here:

<https://dna-explained.com/2023/08/04/globetrekker-a-new-feature-for-big-y-customers-from-familytreedna/>



The closer generation brickwalls can usually be sorted reasonably easily by autosomal matching (ie the tests from Ancestry / FamilyTreeDNA's familyfinder / MyHeritage / 23andme and via the comparison sites, GEDmatch, Geneanet). But for the further back mysteries it can be hard work just with autosomal. So if you have a brickwall ancestor anywhere on your ancestry, have you found a direct male line descendant and put a toe in the water at the entry level y37 test? And found a similar candidate from a family identified from the autosomal matches to be "of interest"?

As many of you know, I am having great success, and fun, with my own Henderson, now known to be Jenkins brickwall, which has, after several decades finally been severely chipped with BigY testing and ties in with where autosomal matches were leading.

We're a slow moving lot. It is estimated that it took us 1400 years to get from R-S7361, positioned about Bonnybridge (SSW of Falkirk), up to Thornhill/Port of Menteith, in what was Perthshire in old money, ie pre 1975. With a couple more BigY tests on the way from some new matches originating from around the right area and having people in the right era, our TimeTree at

<https://discover.familytreedna.com/groups/jenkins/tree?subgroups=41312>

should split and the timeframes be refined significantly.

See also the demystifying terminology in this post, also from Roberta Estes.

<https://dna-explained.com/2023/08/10/haplogroups-dna-snp-are-breadcrumbs-follow-their-path/>

Lorna

Round Robins

The two magazines on our Round Robin circulation list are 'Family Tree' and 'Who Do You Think You Are?' Every issue has some really interesting articles, so this is a really good way of keeping up with the latest news as well as learning some basic skills.

The July 2023 Family Tree magazine* has an article about gaining some Super-Sleuth research skills. Dr Sophia Kay writes about using The Six Hats method and applies the technique pioneered by Edward de Bono specifically to genealogy.

Basically it recommends focussing on the record being evaluated from 6 basic viewpoints, ignoring each of the other considerations until later, and often repeating one or the other of "hats" as appropriate.

Her six hats are:

blue - organising (the heart of the structure and always first and last of them all);

white - facts; yellow - optimism (ie why to accept a record);

black - critical thinking (the questions a record raises);

red- emotions; green - creativity.

* not yet in our folders at the APFHC,

These, and many more magazines can also be accessed electronically both via the library **Libby** app <https://www.kapiticoast.govt.nz/libraries/borrow/online-databases/online-databases>

Also via **PressReader**, which those of you registered with the Kapiti Library can access. The January meeting had a "how to" session on this, which is written up in our February newsletter, freely available on our website under Communications: <http://www.kapitigen.org/communications/newsletters/2023-2/> Contact Bev Chappell RoundRobin"at" KapitiGen.org if you wish to join the circulation list.

Many thanks to member William Corbett who brought to my attention an excellent article in *Who do You Think You Are*, (Issue 2nd May 2023, page 14) by Katherine Cobb on finding wills and probates in the UK. Before 1858, when the system of probate was simplified, it was a complicated procedure often involving different ecclesiastical courts, inventories and letters of administration - a minefield.

A Scottish Flavour

Access the National Library of Scotland Virtual Reading Room wherever you are in the world.

<https://blog.nls.uk/introducing-our-virtual-reading-room-another-way-to-view-the-collections/>

Thank you to the **Lost Cousins 3 August 2023 Newsletter** (<https://www.lostcousins.com/newsletters2/aug23news.htm#BNA>) for the alert that the British Newspaper Archives has added 50

years of *The Scotsman* 1951-2002 to their site, now covering 1818-2002. Access these via FindMyPast on our computers at the APFHC under the Newspapers and periodicals collection from the Search menu.

The same newsletter continues with a link to several items about, & recordings of, accents and dialects of the British Isles. I was fortunate some years ago to be sent a BBC recording from some years before of my distant cousins from Cumberland. He was explaining which Graham family from the area he was related to – in his broad accent he described how these were the “Steen” Grahams - which differentiated them from the millions of others. Yes our shared ancestor was Stephen Graham (my 3*great grandfather). So I learnt how it was pronounced there, along with a wealth of fascinating information about their lives.

Lorna Henderson

Interest Groups

Roots Magic

The next of our online two-monthly **free** Roots Magic user group Zoom sessions is on **Saturday 16th September**, ie third Saturday of the month **2-4pm**.

All versions covered. Open, and free to all.

If you wish to be added to our mailing list for this group and be sent the registration link for the meetings, please use the contact form at <http://www.kapitigen.org/programme/interest-groups/rootsmagic/>

This link can also be used to request a particular topic to be covered at a meeting.

Irish

Meetings of the Irish Interest Group are now two-monthly. The next meeting is scheduled for **Tuesday October 10th, 2-4pm**. APFHC, Paraparaumu Library.

Contact us at <http://www.kapitigen.org/programme/interest-groups/irish/>

DNA

Our August meeting notes / links have been sent to those attending or sending an apology. (Some of what we covered is in the DNA news above.)

NB Thanks to the Election taking over our booking for the hall our next two monthly DNA group meeting is the **third Saturday, 21st October**.

Usual place Waikanae Baptist Church cafeteria, usual time: doors open **1:30 for 2-4pm** session.

All welcome. All experience levels covered.

Free to Kapiti Genealogy members, \$5 for visitors,

If you're not a member of Kapiti Genealogy, why not join? <http://www.kapitigen.org/membership/>

If you wish to be added to our mailing list for this group, use the contact form at

<http://www.kapitigen.org/programme/interest-groups/dna/>

Monthly online Zoom session

Next Session - Monday 4th September at 8pm

Topic: Exploring FamilyTreeDNA

Your host: Lorna Henderson

Time for another DNA based How-to.

Reasons why you might like to consider either uploading your DNA test from elsewhere, free, include:

- FTDNA were testing before we here down-under could access companies like Ancestry and MyHeritage tests. You never know who has only tested at one site, and may be your key to cracking a brickwall
- many of these early testers are of the older generations, and no longer with us – but may have subsequently been upgraded to FamilyFinder, FTDNA's equivalent of the tests offered by the other main companies. Tested older generations are invaluable as their DNA reaches back a further generation, or two, than yours
- the only one of the main 4 offering testing beyond autosomal (all lines of your ancestry) in the form of specialised yDNA (patrilinal) and mtDNA (matrilinal) lines, along with many projects for eg surnames, geographical areas, haplogroups with hopefully helpful admins

Pre-registration required, see link in newsletter covering email, or use Contact Us on our website subject How-to; <http://www.kapitigen.org>

Lorna Henderson



Branch information

Branch meetings:

Evening meeting is held on the fourth Tuesday of the month from January to November.

Daytime meeting is on the following day, usually the fourth Wednesday, from January to November.

Attendance is free to members of the Branch, Visitors \$5 to help cover expenses.

Committee meetings are held on the 1st Wednesday of the month.

Help with Research

Wednesday mornings 10-12am, at the Paraparaumu Library. Open to the public. Volunteers required, please. Contact Bev on [RoundRobin "at" KapitiGen.org](mailto:RoundRobin@KapitiGen.org) if you are able to help.

First Saturday in the month 1-3pm.

To book an appointment for individual assistance phone Lorna on 293 7771 to advise of your research interest, so you can be redirected to someone able to help you.

Next session **Saturday September 2nd.**

Monthly short online session

On the first Monday of the month.

Next meeting is

Monday September 4th at 8pm.

For details, please see page 6.

For members only, registration is required.

The registration link will be sent with the email attached to the newsletter.

Reminder please about the procedure for the key to the library cupboard containing the keyboards.

When you sign in at the library desk to get the key (see above in next column) **you are responsible for returning it**, even if someone else is still researching when you leave.

Please take the **remaining person** to the desk to get them signed in as the person responsible for returning the key when they leave.

Facilities at the

Alison Proctor Family History Centre

The APFHC is located at Paraparaumu Library. Turn right inside the library entrance to the area containing six computers, microfiche and library. The cupboard on the right hand side of the area contains the red folders mentioned below.

Members need to get the cupboard key from the library Welcome Desk, when you will be asked to sign for the key and show your membership card for the current year.

Computer Password at the APFHC

The APFHC computer password changes regularly: check the red Computer Help folder in the top drawer.

Please sign the red signing-in book found in the top drawer.

Keyboards are in the lowest drawer.

Replace the cover on the computer when you leave and lock the keyboard in the cupboard.

All six computers have subscriptions to Ancestry, FindMyPast and access to The Genealogist and Roots Ireland as well as free sites like FamilySearch. (Use your own log-in to FamilySearch).

NB. Please do **NOT** sign out of RootsIreland, FindMyPast or TheGenealogist.

A microfiche reader is available and there are books on a variety of topics that can be borrowed. Boxes of copies of 'Who do you think you are' and 'Family Tree' are on the shelf. The Paraparaumu library also has copies of 'Family Tree' on their magazine shelves.

You are encouraged to save the results of your searches on a USB memory stick or send them to your own email address.

We have a printer if you wish to print a hard copy. Please put 10c per copy in the honesty box on the cupboard door.

All Kapiti Branch events are in the programme on our website, on the calendar.

Log in and explore, update your details and find information on our user groups.

<http://www.kapitigen.org/programme> gives full details of all meetings in the calendar and is easy to negotiate.



Branch Officers

Convener: On rotation
Convenor "at" KapitiGen.org
Secretary: Jenny Wilson
Secretary "at" KapitiGen.org
Treasurer : John Miller
Treasurer "at" KapitiGen.org

Branch responsibilities

Membership:
 Lorna Henderson: Phone: 293 7771
Membership "at" KapitiGen.org

Programme & Activities:

Ian Brooking
Programme "at" KapitiGen.org
 Denice Mc Carten

Librarian: Beverley Chappell

Members: Ian Barbour
 Bernard McManus
 Sue Thomson

Daytime co-ordinator:

Denice McCarten
daygrp "at" KapitiGen.org

Magazine Round Robins:

Bev Chappell
RoundRobin "at" KapitiGen.org

Website: <http://www.kapitigen.org>

Webmasters:

Lorna Henderson & Ian Brooking

Membership - New members always welcome.

Subs. remain at **\$30** for the year April 2023 to March 2024.

Bank account for internet banking payments: BNZ
 02-0591-0040791-000

To access our resources at the Paraparaumu Library use your current membership card. Further details at
<http://www.kapitigen.org/2023/02/renewals-memberships-for-the-2023-24-year/>.

Meeting registrar: Evening: Donna Bridgeman
 Daytime: May Redmund

Audio/Visual Support:

Ian Brooking and Lindsay Olsen

Newsletter Editor: Sheila Jolley
editor "at" KapitiGen.org

Trip organiser: Kathy Callaghan

Publicity: Donna Bridgeman

Computer/Equipment Support: Ian Brooking

Catering: By roster

Raffle: Jenny Wilson

Interest Group Facilitators:

DNA: Lorna Henderson

Irish: [IrishSIG"at"KapitiGen.org](mailto:IrishSIG@KapitiGen.org)

Roots Magic: Lorna Henderson

[RootsMagic "at" KapitiGen.org](mailto:RootsMagic)

Portfolio descriptions and current holders are listed on our web site - in the **Who Does What** section
<http://www.kapitigen.org/home/who-does-what/>

Email links

Throughout the newsletter email links are clickable. Remove the extra @ symbol before sending.

Kapiti Genealogy Venues

APFHC: Alison Procter Family History Centre,
 Ground Floor, North West Corner,
 Paraparaumu Library

Coastal Community Church, 57, Hinemoa Street,
 Paraparaumu

Waikanae Baptist Church Cafe,
 286, Te Moana Rd, Waikanae

Next Evening Meeting
 Tuesday September 26th

Sarah Hewitt NZSG
 Emma, Winifred and Greta

Daytime Meeting
 Wednesday September 27th