

Remember to check our website <http://KapitiGen.org> for additional information on events, Branch, Interest & User Groups, and any late changes.

## Editorial



Mid-winter. Time for research.

You will note that details of the DNA Interest Group are on page 7, along with other DNA topics.

Don't forget to book the date for the Branch Lunch on 28th August. It's a good opportunity to meet others in the Branch. (see page 2 for details) Please let us know if you intend to come for catering numbers, and any dietary requirements. Thank you.

Also, do let Ian Brooking know if there are any topics you would like covered in next year's programme. His contact details are on page 2. If you're interested in a tour of the National Library, note the date of September 17th and book your place with Kathy (page 2) Cheers, Sheila

### Contents

Editorial	1
Branch meetings	2
Branch News	2
June meeting report NZSG News	3
Jan Bonnett	4
Tips for writing your Family History	4
My Naismith / Naesmyth family	5
Above cont. NZSG online DNA	6
'How to' DNA News	7
Interest Groups	8
Branch Information	9
Contacts and Venues	10

This month's newsletter is a real mixture.

I was delighted to read the story of Bill McKeich's Scottish family. (See page 5) It must be so satisfying to be able to go back that far and to identify the areas and buildings your ancestors occupied. I really admire Bill's tenacity. It is an inspiration. Thank you for sharing your findings, Bill.

Sadly we have lost two long term and active members this month. (see pages 2 and 4 for more information)

It is good to see the Irish Interest Group up and running again, thanks to Graeme McVerry. I have to admit that Graeme found the initial references for the Jolley family when I first started looking for records, despite the fact that a registered birth certificate was missing and the date on the death certificate was about seven years out!

Meetings this month:  
Tuesday Evening  
July 23rd

Barbara Mulligan  
'Bolton Street  
Cemetery'

Day Meeting  
Wednesday afternoon  
July 24th

## July Branch Meetings

### Evening meeting.

**When:** Tuesday July 23rd

7pm - meet and greet. Refreshments  
7.30 - 9pm, main session.

**Where:** Coast Community Church

57, Hinemoa Street, Paraparaumu

**What:**

**Barbara Mulligan**

**'Bolton Street Cemetery'**

Barbara will discuss the history and burials in  
Wellington's oldest known cemetery.



**Convenor:** Denice McCarten

### Daytime meeting

**When:** Wednesday July 24th

Doors open 1.30pm, Meeting 2 - 4pm

**Where:** Waikanae Baptist Church Café, 286, Te Moana Road, Waikanae

**What:** Notes from the evening meeting. Followed by discussion and research.

**Co-ordinator:** Denice McCarten

## Branch notices

**NB. Branch lunch! Book the date.**

**Waikanae Baptist Church on 28th August at 12.30pm**

The lunch will be pizza and dessert, along with tea, coffee or soft drink.

Free to all members. Don't miss out. Come and meet the other Branch members you don't usually see.  
See you all there.

**Welcome to new member Gillian Tutt.**

We look forward to meeting you and hearing of your research interests.

**Tour of National Library Tuesday 17 September, 10.30am**

**Advanced notice.** Kathy has organised another tour of the National Library for Tuesday 17 September at 10.30am. To register for this tour, please email [kathycallaghan@gmail.com](mailto:kathycallaghan@gmail.com) or phone 021 0452925

**Sadly, we have lost two members this month, Barry Brooks and Jan Bonnett (see page 4)**

We send condolences to their respective families. Our thoughts are with you.

### **Barry Brooks - 1932-2024**

Barry's long career in the diplomatic service certainly allowed him to explore his genealogy interests, which included Irish research, in many parts of the world.

Barry, and his late wife, Joan, became members after they settled in Waikanae.

His sudden death was a surprise to all, as he was still active in his many interests.

**N.B.** Ian is still open to hearing from anyone who would like to hear a particularly speaker or topic at the October meeting.

Or perhaps you have an hour-long interesting story to tell us.

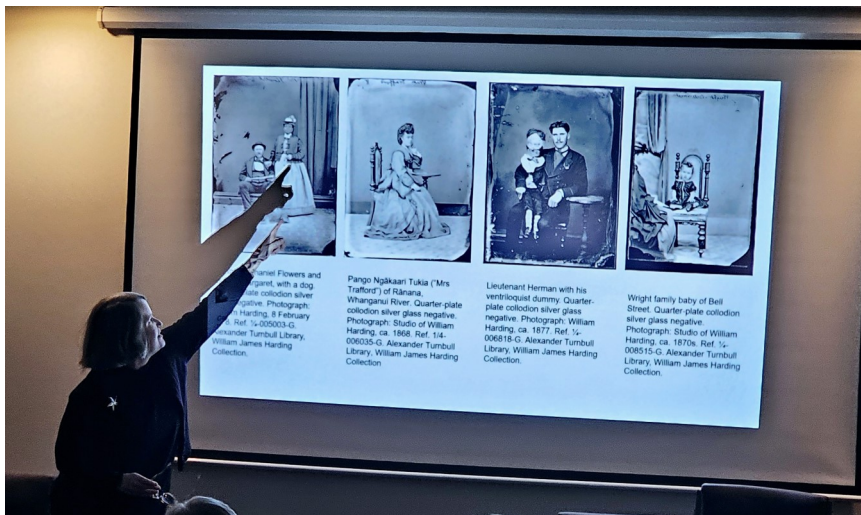
Please get in touch with [Programme@@KapitiGen.Org](mailto:Programme@@KapitiGen.Org)

## Photographic Archives at the June meeting

Louise Garrett, a curator of The Alexander Turnbull Library Photographic Archive, accompanied by Geraldine Warren, curator of the NZ and Pacific Collection, provided a fascinating evening about the ATL Photographic Archive. They covered the history of the collection, with some fascinating examples dating from the very early days of New Zealand photography, right through to the “born digital” age, which was a new phrase to many of us. The aims, current collection priorities and how to search and access the content, both digital and physical, were also discussed. The published items are only the tip of the iceberg. Do remember to use the valuable ‘Ask a Librarian feature’ of the National Library website. You will get up to 2 hours free from the very experienced archivists and librarians.

Louise kindly supplied a copy of her slides afterwards, which were presented, with a summary of her talk, to the Day Group meeting the following day. They also had the bonus of a link Louise supplied about the ‘rather-funny-to-us’, but annoying downside to the curators, of the perils of indexing and photographic naming for posterity. <https://natlib.govt.nz/blog/posts/introducing-mr-ibm-building>

She also suggested that blog posts authored by Helen Smith on the National Library site may be of interest: <https://natlib.govt.nz/blog/authors/helen-smith>



L to R: Convenor, Ian, with Geraldine and Louise Garrett.

## NZSG Kiwi Collection

The e-kit, regularly sent out to all NZSG members, has announced a Kiwi Collection Update is scheduled for next week. There have been over 1 million new records added bringing the total records to 15.7 million. Also added were over 120,000 images. More details can be found on the New Zealand Society of Genealogist’s Facebook page: <https://www.facebook.com/NZSGFRC>.

The Kiwi Collection is an NZSG Subscription based database. Access can be found on the NZSG Website, under the Collections Tab. Varying levels of access apply ranging from public (ie free to all), NZSG member (what can be seen if you subscribe to NZSG) and full access (ie you have also paid \$50 for a year or \$20 for a month for the full Collection access).

Content, particularly in the Certificates collection, can be much wider than NZ only and be well worth the value of your Sub in savings on purchasing certificates. Do remember to submit your certificates as well.

## Jan Bonnett - 1937-2024

Jan Bonnett was an early Kapiti Genealogy Group member, Convenor and Fundraiser, and one of the Kapiti Mafia - a group of researchers who visited local research places every week.

In the late 1990's her work for the Public Trust began and overtook personal research, but she did give occasional talks to our group. When someone dies intestate the Public Trust must find all living descendants and pay out the estate, whatever the value. If no relatives are found then it goes to the Crown.

The Public Trust used Jan to find these "missing relatives" so her research was both going back and going forward. Often Jan's phone calls started with "You don't know me, but I'm Jan Bonnett, working for the Public Trust and the estate of "John Smith" who I believe may be related to you. All the relations will receive a share."

Naturally this prompted disbelief and suspicion. Is she a scammer?

Jan's research resulted in sometimes very large family trees and could take over a year. Because we are a society of immigrants and emigrants, relations could be spread across the world and many did not know of each other, or had just lost touch. A typical email to Jan "Even if it does not come to anything it is nice to find Ron lives close enough that I may get to meet him in person".

Jan took great pleasure in solving these genealogical puzzles and reconnecting families.

Her summary at the end of a talk was MAKE A WILL, no matter who you are or what you own, and update it when circumstances change. Tell your children, friends and relations.

Here's a well written newspaper article about her Public Trust work.

[www.stuff.co.nz/life-style/life/67466583/she-investigates-the-dead](http://www.stuff.co.nz/life-style/life/67466583/she-investigates-the-dead)

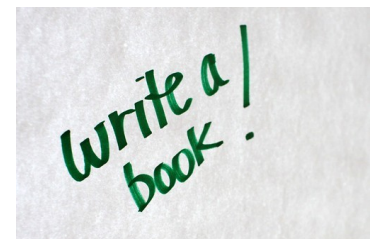
*Deborah Shuker*

## 9 tips for writing your family history

By Editors of Family Tree Magazine

This helpful article first appeared in the December issue of Family Tree magazine in 2018 and has since been updated in 2022.

1. Know Your Purpose. Before you begin, it's important to know what you hope to accomplish with this writing project.
2. Make a Plan. An outline gives you a framework for building your project, especially if it involves multiple people or a long time span.
3. Say It with Pictures. Pictures and graphs will engage your readers
4. Get Organized and Utilize Apps, like spell checkers and organisers.
5. Generate ideas with prompts from others
6. Seek help from other writers. Join a writing group.
7. Begin in the Middle. Don't let the "how to start" roadblock stall your project right out of the gate.
8. Write naturally. Pretend you're telling a story to a friend
9. Take Your Time. A deadline can motivate you, but give yourself plenty of time. You want this project to add fulfilment to your family research, not cause stress.



## My Naismith/Naesmyth family

For many years, my knowledge of the NAISMITH/NAESMYTH family extended to a couple of nieces and my mother who have the name as a second given name, named after my great grandmother Mary NAISMITH.

She, together with her spouse George Park BURNS brought their family of three children to New Zealand on the "Peter Denny" landing at Dunedin on Saturday 26<sup>th</sup> July 1874.

I was also aware of a Robert NAISMITH who lives in Timaru but who has no interest in tracing his ancestry.

This all changed three weeks ago when I became aware, through a DNA match of Meryl NAISMITH who posted her GEDmatch number, which proved to be her father's Reference number. I pursued the hint I was given and was subsequently able to join the NAISMITH Clan Chat page that has proved invaluable in being able to place on my Family Tree a whole new set of names.

The most interesting has turned out to be Stu Christie who has a DNA match with me of 41cM over four segments. He turned out to be a 3<sup>rd</sup> cousin 1 x r, lives in Auckland and our most recent common ancestors are his great great grandparents and my great grandparents, Alexander NAISMITH b. Abt. 1836, Bothwell, Lanarkshire, d. 13 Nov 1882, Dunedin and Sarah NICHOLSON b. Bet. 5 Dec 1819, Carlisle, England.

Stu's great grandmother Margaret NAISMITH and my great grandmother Mary NAISMITH were sisters. I was not aware that Margaret had also come out to New Zealand and lived in Dunedin. She married William McDOUGALL.

With being able to add a new branch to my "tree", I decided to use the Ancestry hints and go back a little further. Where possible I used census and official BDM records to verify the details that appeared in the hints.

I was on a roll! It appeared that the NAESMYTH family originally lived in the county of Peeblesshire not far from Edinburgh and were originally nail makers.

Small localities close to Peebles are Dawyck, Barnes and Posso. These are localities where members of the NAESMYTH family were born. The family became associated with the castle at Posso when Sir Michael NAESMYTH of Posso married Elizabeth Baird of Barnes in the 16<sup>th</sup> Century.

Upon the death of Elizabeth in 1606 Sir Michael NAESMYTH became owner of Dawyck Castle which had been the BAIRD family ancestral home .



*Dawyck Castle, Peebleshire*

I have visited Peebles and stayed with a half 5<sup>th</sup> cousin on my father's side of the family. Little did I know then that I had a connection to Peeblesshire through ancestors on my mother's side of the family? Clearly another visit to Scotland is called for.

Further research lead to the discovery of my 11<sup>th</sup> Great Grandparents, Margaret Kelly STUART b. 1562 at Traquair d. 1625 at Traquair and William BURNET b. 1562 at Barnes and d. 1669 at Posso. Their daughter, Agnes BURNET, b. 1558 at Barnes and d. 1620 at Posso married James NEASMYTH b. 1575 at Posso and d. 1658 at Dawyck.

**PTO**



*Traquair House*

## NZSG News

Traquair House is still occupied today as a private residence and high-end bed and breakfast. It is considered to be the longest continually occupied house in Scotland.

The STUART family lived at Traquair house for 400 years.

Moreover, yes, Mary Queen of Scots has a place on my Family Tree.

She is the mother-in-law of the half 2<sup>nd</sup> great aunt of my 7<sup>th</sup> great aunt!

### Genealogy of William Ernest McKeich

The furthest back I can go is to Sir James STEWART, Laird of Traquair b. 1506 d, 1548, and Lady Cataharina / Catherine RUTHERFORD.

This couple are my 14<sup>th</sup> Great Grandparents.

Their son was Willem / William STEWART b. 1506 d. 1548,

Laird of Traquair whose spouse was Christine HAY b. 1510, d, 1548 of Culross Castle.

They were married on 6<sup>th</sup> July 1624 at Traquair. This couple are my 13<sup>th</sup> Great Grandparents

Their son and daughter-in-law my, 12<sup>th</sup> Great Grandparents are Lord James STEWART b. 1534, d. 1606 at Traquair and his spouse Catherine KER, who he married at Traquair in 1554.

Their daughter, my 11<sup>th</sup> Great Grandmother Margaret Kelly STUART and her spouse William BURNET are referred to on the previous page.

- 10<sup>th</sup>G GF James NAESMYTH of Posso, 1575 - 1658
- 9<sup>th</sup> G GF Thomas NAESMYTH of Posso 1617 – 1682
- 8<sup>th</sup> G GF Robert Smith NAISMITH of Hamilton, 1640 – 1667
- 7<sup>th</sup> G GF John NAISMITH of Hamilton, 1671 – 1772
- 6<sup>th</sup> G GF John NAISMITH of Hamilton, 1736 - 1819
- 5<sup>th</sup> G GF Thomas NAISMITH of Hamilton, 1768 – 1883
- 4<sup>th</sup> G GF Alexander NAISMITH, of Glasgow, 1794 – 1863
- 3<sup>rd</sup> G G F Alexander NAISMITH of Boswell, 1815 – 1882
- 2<sup>nd</sup> G GM Mary NAISMITH of Boswell, 1884 – 1893
- G M Jean BURNS of Dunedin, 1891 – 1930
- M Mary Naismith TURLEY of Dunedin, 1906 – 1994
- S William Ernest McKeich of Dunedin, 1933 - \_\_\_\_\_



*Barnes Castle -  
still standing today*

*Bill McKeich*



## NZSG Online DNA Group (ODIG)

An NZSG Members only benefit, free with your sub to our parent body, the NZ Society of Genealogists. <https://genealogy.org.nz/NZSG-Online-DNA-Interest-Group/11380/>

The next online presentation is **Wednesday 31<sup>st</sup> July, 7:30pm** on Teams.

This month it is Kaye Batchelor with "Searching for my 2x Great Grandfather - a case study using Genealogy plus DNA".

Those already registered for the ODIG will receive reminder emails with joining instructions two days before and on the day. If you receive these you are already registered with this group.

# 'How to' Monthly Zoom session - August 5th

Members only, online Zoom session, **Monday August 5th, 8-9 pm**

**Topic:** Ancestry Pro Tools – Enhanced Shared matches. (See also DNA News below.)

**Your host:** Lorna Henderson

Let's explore what all the fuss is about. Ancestry has finally, albeit behind a paywall so additional to a sub, caught up with the other companies that have offered this feature for a long time. As Ancestry has the largest database, it's a game changer. Stories of brick walls falling around.

Here's a useful post on the Ancestry blog: <https://www.ancestry.com/c/ancestry-blog/pro-tools-dna-matches/>

**Pre-registration required.** link in the covering email to members that brought you this newsletter, or see our website <https://www.kapitigen.org/programme/online-how-to/>

## DNA Interest Group

The next 2-monthly DNA meeting is on **Saturday August 10th**

Waikanae Baptist Church cafeteria 2-4. Doors open 1:30pm.

All welcome. Visitors \$5 entry please.

Notes are usually sent to attendees and those sending an apology.

If you're not a member of Kapiti Genealogy, why not join?

<http://www.kapitigen.org/membership/>

Second Saturday of every second month February to October, plus a bonus Online one toward the end of the year. If you wish to be added to our mailing list for this group, use the contact form at

<http://www.kapitigen.org/programme/interest-groups/dna/>

Reminders of the meetings are sent to those on our mailing list.

## DNA News

For those interested in their DNA and keeping up with the assorted message boards it would be rather hard to avoid all the excitement about Ancestry's release of their Pro tools for Enhanced Shared Matches. Here are a couple of blog posts that show how these really help you sort out your matches:

One by Angie Bush, Senior Research Manager at AncestryProGenealogists:

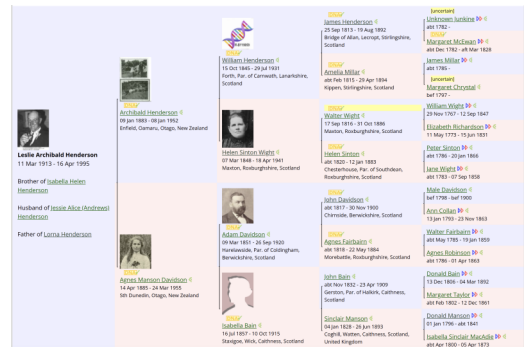
<https://blogs.ancestry.com/cm/pro-tools-dna-matches/>

and another by Roberta Estes of DNA Explained: <https://dna-explained.com/2024/06/22/ancestrys-protools-see-how-much-dna-your-matches-share-and-their-relationship-to-each-other/>

This will also be the topic for our Monthly Members only Zoom session on 5th August.

WikiTree has made some changes to the DNA aspects of their offerings. Read their post about the changes here: <https://www.wikitree.com/g2g/1761119/did-you-notice-the-dna-related-changes>

The Compact Tree view now requires viewers to be logged in (it's a free site). The less succinct, fewer generation, Ancestors view for a person is still completely open. Both have what is displayed privatized according to the privacy settings on each profile. So if you are in the habit of providing a link to your Compact Tree for the quick overview of a line of ancestry f or eg DNA matches, knowing it can be viewed by all without hassles, you may care to switch to sending the less compact Ancestors chart link instead.



## Interest Groups

### Irish Interest Group Revival

After a hiatus of several months, the Kapiti Branch Irish Interest Group was revived with a lively two-hour meeting at the Paraparaumu Library on Tuesday 9<sup>th</sup> July.

Eight members met to discuss progress-to-date on their Irish research, and what they hoped to achieve next. Four attendees were comparatively new to Irish research and four (including three Kapiti Genealogy committee members) had been involved over a longer term. Thank you to those that attended. I hope that you learned from the meeting and enjoyed it as much as I did.

Ancestral interest covered much of Ireland, including Counties Kerry, Down, Armagh, Dublin, Cork, Mayo, Sligo, Tipperary, and Roscommon. Some had progressed through DNA-based research, some by more traditional methods, and others by a mixture of both. Some were interested in records as recent as the 1920s, while others had progressed back to the first half of the 19<sup>th</sup> century and even the late 1700s.

One attendee indicated interest in how to discover what life was like for our Irish ancestors and what was going on in Irish history at the time. This item generated discussion by all, with several contributing what they had discovered from newspaper records, trade directories and topographical dictionaries. To finish, a summary two-page list of Irish Genealogy Websites and Books was distributed, but time was too short to discuss it in detail.

To feed the interest of the newcomers, meetings will be held monthly on the **second Tuesday of the month** for as long as attendance warrants that frequency. Graeme McVerry will lead the next meeting at **Paraparaumu Library from 1:30-3:30 on Tuesday 13th August.**

Others are encouraged to join the meeting, whether new to Irish family history research or more experienced. An even balance of both will promote informed discussion and allow one-on-one guidance to be provided for the newcomers.

We'll start with those wishing to report progress on their Irish research, and any problems for which they seek advice. This will be followed by a discussion on the importance of townlands in Irish family history research, and how to identify and locate them. It is planned to have an hour remaining to provide hands-on research guidance, making use of the written and computer resources available at the library.

*Graeme McVerry*

### Roots Magic User Group

Please note the day change for our next 2-monthly Zoom meeting: **Sunday Jul 21<sup>st</sup> 2-4pm**

These sessions are (usually) on the third Saturday of every second month March to November, from 2-4pm.

Theme for this meeting is the newly released **RootsMagic 10**.

All welcome. Free to all.

The pre-registration link for the session is sent to those on our mailing list nearer the time.

To be added to our mailing list, please use the contact form at

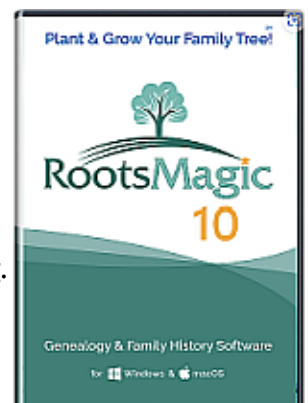
<http://www.kapitigen.org/programme/interest-groups/rootsmagic/>

This link can also be used to request a particular topic to be covered at a meeting.

*Lorna Henderson*

### DNA Interest Group

The next 2-monthly meeting is on **Saturday August 10th (See page 7)**





## Branch information

### Branch meetings:

**Evening meeting** is held on the fourth Tuesday of the month from January to November.

**Daytime meeting** is on the following day, usually the fourth Wednesday, from January to November. Attendance is free to members of the Branch, Visitors \$5 to help cover expenses.

### Help with Research

**Wednesday mornings** 10-12am, at the Paraparaumu Library. Open to the public. Volunteers required, please. Contact Bev on RoundRobin "at" KapitiGen.org if you can to help.

### First Saturday in the month 1-3pm.

To book an appointment for individual assistance phone Lorna on 04 293 7771 so you can be directed to the person who can help you.

Next session **Saturday August 3rd**

### 'How to' Monthly short Zoom session

First Monday of the month for 1 hour.

Next meeting is **Monday August 5th at 8pm.**

**Topic: Ancestry Pro tools**

Host: Lorna

More information on **page 7**

Members only. Free. For registration use the link in email sent with last newsletter. Or you can register at <http://www.kapitigen.org/programme/online-how-to/> and follow the instructions.

**Reminder** please about the procedure for the key to the library cupboard containing the keyboards.

When you sign in at the library desk to get the key (see above in next column) **you are responsible for returning it**, even if someone else is still researching when you leave.

Please take the **remaining person** to the desk to get them signed in as the person responsible for returning the key when they leave.

### Facilities at the

#### Alison Proctor Family History Centre

The APFHC is located at Paraparaumu Library. Turn right inside the library entrance to the area containing six computers, microfiche and library. The cupboard on the right hand side of the area contains the red folders mentioned below.

**Members need to get the cupboard key from the library Welcome Desk, when you will be asked to sign for the key and show your membership card for the current year.**

#### Computer Password at the APFHC

The APFHC computer password changes regularly: check the red Computer Help folder in the top drawer.

Please sign the red signing-in book found in the top drawer.

Keyboards are in the lowest drawer.

Replace the cover on the computer when you leave and lock the keyboard in the cupboard.

All six computers have subscriptions to Ancestry, FindMyPast and access to The Genealogist and Roots Ireland as well as free sites like FamilySearch. (Use your own log-in to FamilySearch).

**NB.** Please do **NOT** sign out of RootsIreland, FindMyPast or TheGenealogist.

Please **do not switch off** the printer.

A microfiche reader is available and there are books on a variety of topics that can be borrowed. Boxes of copies of 'Who do you think you are' and 'Family Tree' are on the shelf.

You are encouraged to save the results of your searches on a USB memory stick or send them to your own email address.

We have a printer if you wish to print a hard copy. Please put 10c per copy in the honesty box on the cupboard door.

**All Kapiti Branch events are in the programme on our website, on the calendar.**

Log in and explore, update your details and find information on our user groups.

<http://www.kapitigen.org/programme> gives full details of all meetings in the calendar and is easy to negotiate.



### Branch Officers

**Convener:** On rotation  
Convenor "at" KapitiGen.org  
**Secretary:** Jenny Wilson  
Secretary "at" KapitiGen.org  
**Treasurer :** John Miller  
Treasurer "at" KapitiGen.org

### Branch responsibilities

#### Membership:

Lorna Henderson: Phone: 04 293 7771  
Membership "at" KapitiGen.org

#### Programme & Activities:

Ian Brooking  
Programme "at" KapitiGen.org  
Denice Mc Carten

**Librarian:** Beverley Chappell

**Members:** Bernard McManus  
Graeme McVerry

#### Daytime co-ordinator:

Denice McCarten  
daygrp "at" KapitiGen.org

#### Magazine Round Robins:

Bev Chappell  
RoundRobin "at" KapitiGen.org

**Website:** <http://www.kapitigen.org>

#### Webmasters:

Lorna Henderson & Ian Brooking

**Meeting registrar:** Evening: Judy Olsen  
Daytime: May Redmund

#### Audio/Visual Support:

Ian Brooking and Lindsay Olsen

**Newsletter Editor:** Sheila Jolley  
editor "at" KapitiGen.org

**Trip organiser:** Kathy Callaghan

**Publicity:** Maureen Robb

**Computer/Equipment Support:** Ian Brooking

**Catering:** By roster

**Raffle:** Marion Fitchett

#### Interest Group Facilitators:

**DNA:** Lorna Henderson

**Irish:** Graeme McVerry  
IrishSIG "at" KapitiGen.org

**Roots Magic:** Lorna Henderson  
RootsMagic "at" KapitiGen.org

Portfolio descriptions and current holders are listed on our web site - in the **Who Does What** section.

#### Email links

Throughout the newsletter email links are clickable. Remove the extra @ symbol before sending.

#### Kapiti Genealogy Venues

APFHC: Alison Procter Family History Centre,  
Ground Floor, North West Corner,  
Paraparaumu Library  
Coast Community Church, 57, Hinemoa Street,  
Paraparaumu  
Waikanae Baptist Church Cafe,  
286, Te Moana Road, Waikanae

#### Membership -

\$30 for the year 1 April to 31st March. You can use your current membership card to access our resources at the Paraparaumu Library.

**New members** always welcome. Please register first at [https://www.kapitigen.org/membership/apply\\_online/](https://www.kapitigen.org/membership/apply_online/)

**Renewals** Payment may be made to BNZ 02-0591-0040791-000 with your membership number and phone number in the payee fields  
Further details on <http://www.kapitigen.org/2024/01/renewals-membershipsfor-the-2024-25-year/>

Branch Meetings in August  
Evening Meeting  
Tuesday August 27th

Michael Gaffaney  
The Guild of One-name  
Studies

Daytime Meeting  
Wednesday August 28th